

## JEEP JL 2018 – 20XX

### SPARE TIRE CARRIER INSTALLATION INSTRUCTIONS



## SAFETY

**Know Safety, no injury. Know injury, no safety. ~Author Unknown**

If there are any questions, call 1-855-HHTOUGH

- **READ ALL SAFETY INSTRUCTIONS BEFORE INSTALLATION**
  - FOLLOW ALL INSTRUCTIONS FOR PROPER ASSEMBLY
  - WEAR APPROPRIATE EYE PROTECTION
  - EXERCISE CARE WHEN LIFTING COMPONENTS
  - USE APPROPRIATE TORQUE FOR BOLTS
  - BLUE THREAD LOCKING COMPOUND IS RECOMMENDED ON ALL BOLTS

#### **SUGGESTED TORQUE VALUES FOR STEEL GRADE SAE 5 BOLTS**

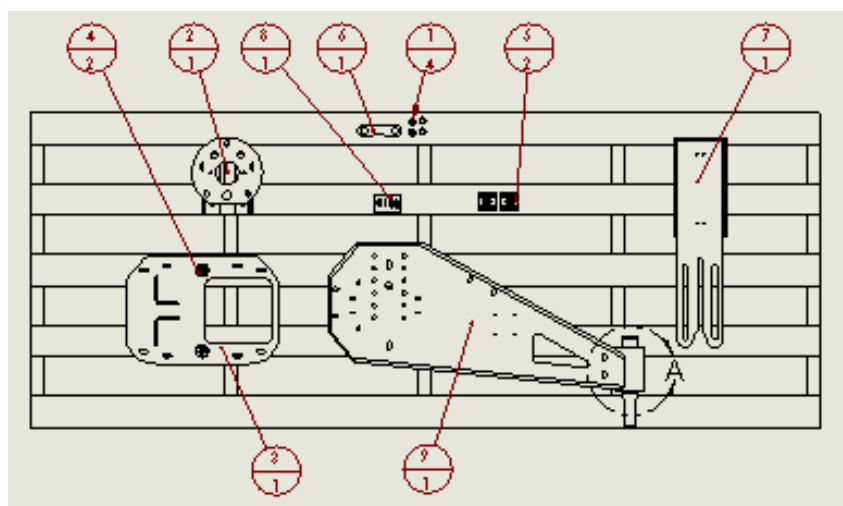
BOLT DIAMETER (INCH)	TREADS PER INCH	TORQUE (POUND-FEET)
1/4	20	7
5/16	18	14
3/8	16	25
7/16	14	40
1/2	13	60
9/16	12	88
5/8	11	120
3/4	10	200
7/8	9	302
1	8	466



600-56-0750

## I. PARTS LIST

ITEM NO.	QTY.	PART NUMBER	DESCRIPTION
1	4	320-13-0020	SPACER 0.75"
2	1	601-56-4354	STA
3	1	601-56-4358	O-PLATE
4	2	601-56-4359	CONE
5	2	601-56-4360	CUP
6	1	601-56-4361	DOGBONE
7	1	601-56-4452	THIRD BRAKE LIGHT
8	1	60K-56-0152	HARDWARE KIT #152
9	1	60P-56-0750	JP JL STC



**REMOVE CONTENTS FROM BOX AND VERIFY ALL PARTS ARE PRESENT.**

**If there are any questions, call 1-855 HHTOUGH or email [HHORDERS@hammerheadarmor.com](mailto:HHORDERS@hammerheadarmor.com)**

## II. TOOL LIST

1. A Good Friend
2. Basic Tool Kit
3. 13mm socket
4. 9/16" socket
5. 9/16" wrench
6. 3/4" wrench
7. Torx 20 socket
8. Torx 30 socket
9. Hacksaw
10. 8mm allen wrench
11. Trim tool



600-56-0750

### **III. VEHICLE PREPARATION**

1. Park vehicle on level surface and engage parking brake.
2. Disconnect both batteries.
3. Remove spare tire with the OE Lug Wrench
4. Open the rear door and pop off the interior plastic panel. Using a trim tool works best. It is attached by plastic push clips.
5. Unplug the 2 wire connectors for the camera and the third brake light.
6. Using a 13mm socket, remove the 8 bolts attaching the OE spare tire carrier.
7. Disassemble the OE spare tire carrier to remove the third brake light, bolt plate, and camera mount. This can be done entirely with a Torx 20 and Torx 30 sockets.

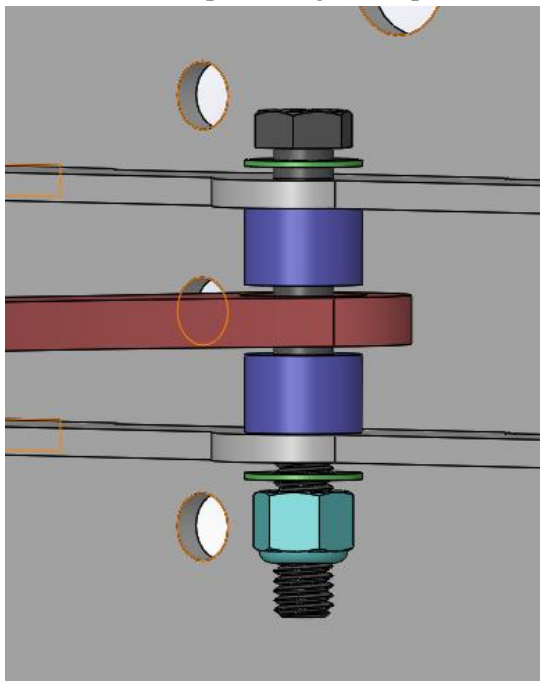
### **IV. SPARE TIRE CARRIER INSTALLATION**

1. Place the Spare Tire Carrier shaft in the housing in the Rear Bumper. Using a  $\frac{3}{4}$ " wrench and the provided  $\frac{1}{2}$ " fine thread bolt, washer, and lock washer, secure the shaft to the Rear Bumper as shown below.



2. Using a 13mm socket, install the provided O-Plate on the rear tailgate with the eight OE bolts. Do NOT tighten bolts yet. Center the O-Plate on the slots and tighten the two left-most bolts only. You will need to remove one of the OE vents to install the O-Plate.
3. Using an 8mm allen wrench, install the cones on the O-Plate with the provided  $\frac{3}{8}$ " socket head cap screws.

4. Using a 9/16" wrench and socket, install the dogbone on the STC using the 3/8" bolt, washer and nylock nut from hardware kit #152 as shown below. (order vertically as follows: bolt, washer, stc ear, spacer, dogbone, spacer, stc ear, washer, nut)



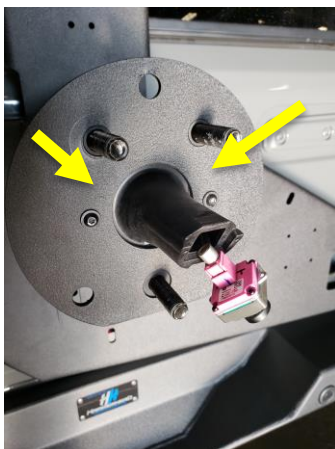
5. Using a 9/16" socket, install the 3<sup>rd</sup> brake light bracket and the Spare Tire Adapter onto the Spare Tire Carrier as shown. Use the 4 carriage head bolts, washers, and nylock nuts from hardware kit #152. The brake light bracket and spare tire adapter are adjustable vertically for different size tires. (35" in the lowest position, 40" in the highest position.) IT IS VERY IMPORTANT TO TIGHTEN THESE BOLTS TO SPEC OR RISK HAVING YOUR SPARE TIRE FALL OFF THE VEHICLE



6. Using a hacksaw, remove 0.25" of material from the risers on the OE camera mount as shown below.



7. Using the Torx 20 socket, install the OE bolt plate and camera mount onto the Spare tire Adapter using the two OE screws as shown below.



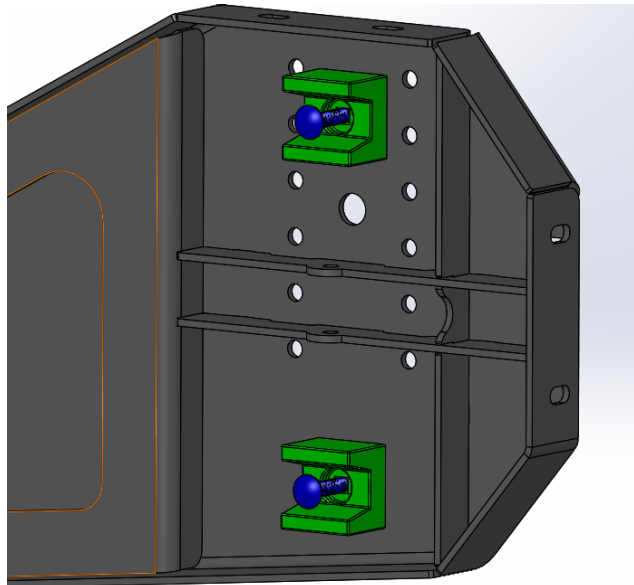
8. Route the Camera and 3<sup>rd</sup> brake light wires through the hole shown below.



9. Using a Torx 20 socket, install the OE 3<sup>rd</sup> brake light onto the 3<sup>rd</sup> brake light bracket using the two OE screws as shown below.



10. Using a 9/16" socket, install the cups on the Spare tire Carrier using two carriage head bolts, washers, and nylock nuts as shown below. Do NOT tighten bolts yet.



11. Install the other side of the dogbone to the O-Plate in the same manner as step 4.
12. Adjust properly according to Spare Tire Carrier Adjustment instructions on page 7.
13. While tailgate is closed, tighten all bolts. Run the wires back through the OE hole in the tailgate and connect the wire connectors. Reinstall the plastic trim on the inside of the door.
14. Install spare tire with OE lug nuts.





600-56-0750

## V. SPARE TIRE CARRIER ADJUSTMENT

- a. There needs to be approximately 2" of back pressure on the Spare Tire Carrier when the door is closed. To measure this, push the Spare Tire Carrier closed until you start to feel any pressure. This point should have the door open approximately 2".
- b. The Spare Tire Carrier is adjustable via the slots in the O-Plate. Moving the O-Plate left will tighten the Spare Tire Carrier and moving it right will loosen it.
- c. Once the Spare Tire Carrier is adjusted properly, tighten the bolts on the O-Plate.



**Congratulations! Your Installation is now complete.  
Thank You for your purchase!**