


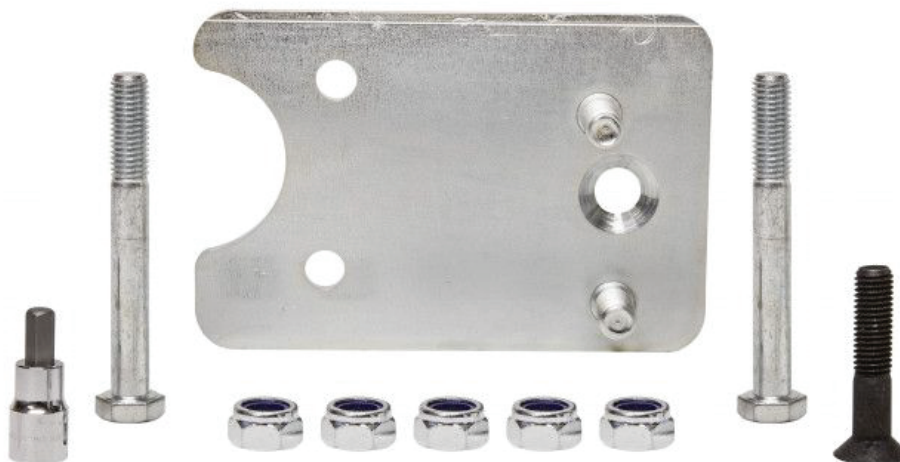


86-95 Suzuki Samurai 1.3L Sidekick/Tracker Power Gearbox Bracket Kit (SKU# SST-PSFB and SST-PSFB-RHD)

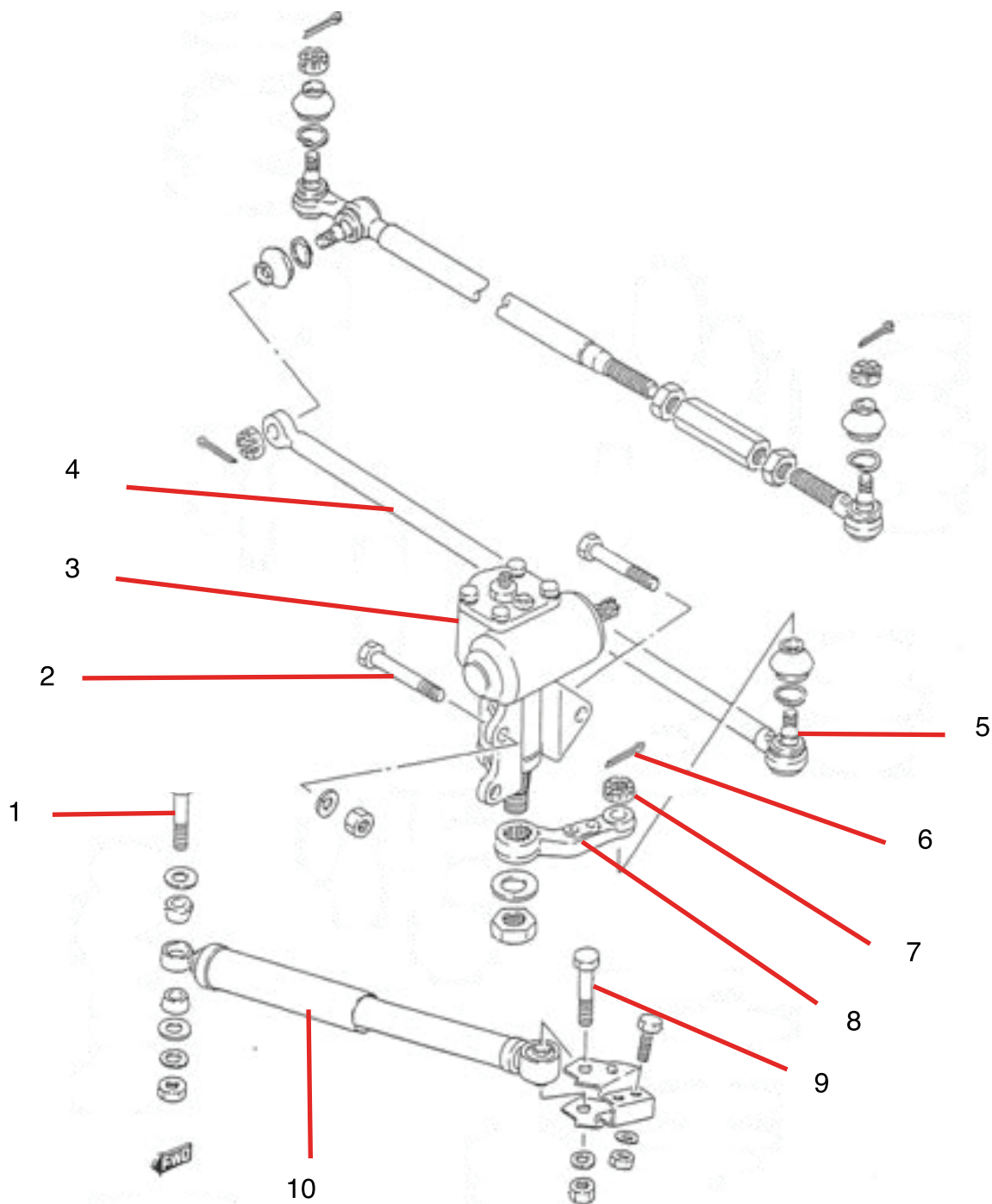
Installation Instructions

	NOTICE Read instructions completely before installing this product. Refer back to the instructions frequently during installation.		CAUTION Flying Object Hazard. Fluid Splash Hazard. Wear safety glasses at all times when working on vehicle.
---	--	--	--

 **WARNING:** Cancer and Reproductive Harm - www.P65Warnings.ca.gov



Steering System Parts



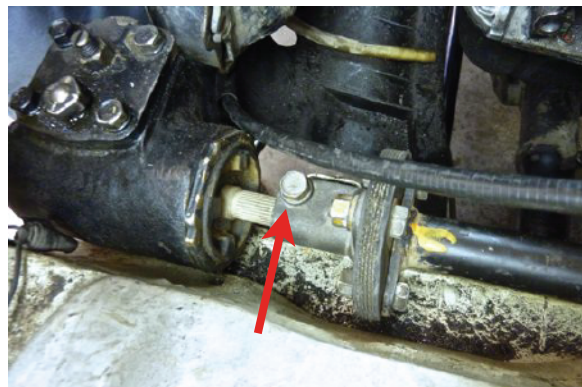
- 1. Steering Damper-to-Frame Stud, Washer and Nut
- 2. Steering Gear Bolt, Washer and Nut
- 3. Steering Gear
- 4. Drag Link
- 5. Drag Link Tapered Stud

- 6. Cotter Pin
- 7. Castle Nut
- 8. Pitman Arm
- 9. Damper-to-Pitman Bolt, Washer, & Nut.
- 10. Steering Damper



Step 1

Remove the existing steering gear box from the frame by first loosening the rag joint bolt from the steering gear box input shaft. Next, loosen and remove the universal joint bolt and washer from the steering shaft. Next, loosen and remove the (3) bolts holding the gearbox onto the frame rail. Move the steering gear box forward and disconnect the rag joint flange from the steering gear. Disconnect the steering shaft from the universal joint and set the shaft aside. (It may be necessary to loosen the radiator mounts and slide the radiator away from the steering gear box before removing the steering gear box.)



Step 2

Position the new power steering gearbox as shown.



Step 3

Next rotate the pump into this position.



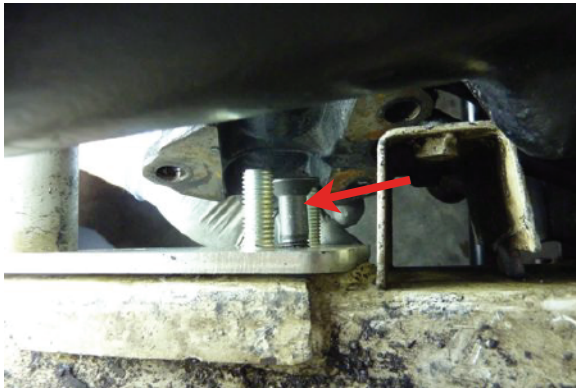
Step 4

Shift the power steering gearbox toward the opposite side of the vehicle and position the supplied bracket between the gearbox and the frame.



Step 5

Install the supplied flat head bolt into the bracket.



Step 6

Install the supplied nylock nut on the flat head bolt, but do not tighten at this time.



Step 7

Install the supplied bolt through the bracket and frame as shown. This is the top bolt.



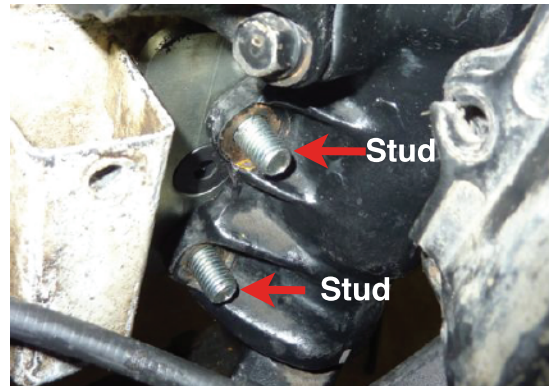
Step 8

Start the supplied nylock nut on the bolt. Then tighten both nylock nuts to 60 ft-lbs.



Step 9

Position the power steering gearbox on the studs of the bracket.



Step 10

Install the third steering gearbox bolt as shown. This is the bottom bolt.



Step 11

Install the supplied nylock nut as shown. Do not tighten yet.



Step 12

Install the (2) supplied nylock nuts on the bracket studs. Gradually tighten the (3) nylock nuts until you reach 60 ft-lbs.



These instructions are designed as a general installation guide. Installation of many Low Range Off-Road products require specialized skills such as metal fabrication, welding and mechanical trouble shooting. If you have any questions or are unsure about how to proceed, please contact our shop at 801-805-6644 or seek help from a competent fabricator. Using fabrication tools such as welders, torches and grinders can cause serious bodily harm and death. Please operate equipment carefully and observe proper safety procedures.

Rock crawling and off-road driving are inherently dangerous activities. Some modifications will adversely affect the on-road handling characteristics of your vehicle. All products sold by Low Range Off-Road are sold for off road use only. Any other use or application is the responsibility of the purchaser and/or user. Some modifications and installation of certain aftermarket parts may under certain circumstances void your original dealer warranty. Modification of your vehicle may create dangerous conditions, which could cause roll-overs resulting in serious bodily injury or death. Buyers and users of these products hereby expressly assume all risks associated with any such modifications and use.

Revised 04/29/20© Copyright 2020 Low Range Off-Road, LC All Rights Reserved

