




4th Gen Suzuki Jimny Rock Sliders Installation Instructions

	NOTICE Read instructions completely before installing this product. Refer back to the instructions frequently during installation.		CAUTION Flying Object Hazard. Fluid Splash Hazard. Wear safety glasses at all times when working on vehicle.
 WARNING: Cancer and Reproductive Harm - www.P65Warnings.ca.gov			

Installation for Driver Side

Step 1

Insert loose bracket above frame with notch on the inside of the frame. You may need to insert it midway on the frame and then slide it into proper position.

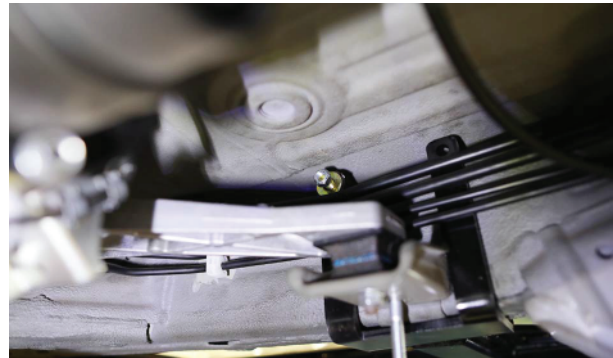


LROR-307766-INS



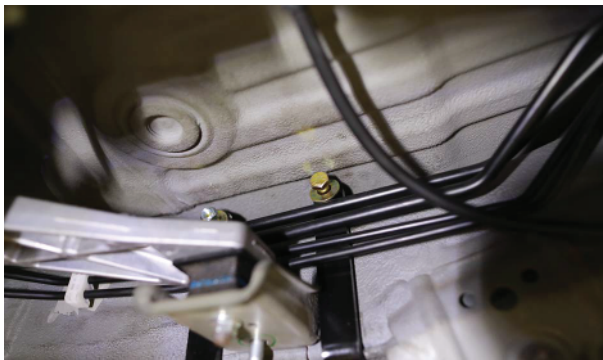
Step 2

Lift the slider into place on the frame as shown.



Step 3

Insert the 3/8" bolts with washers into the rear bracket first and get the nut and washer hand tight. This will help install the front bracket.



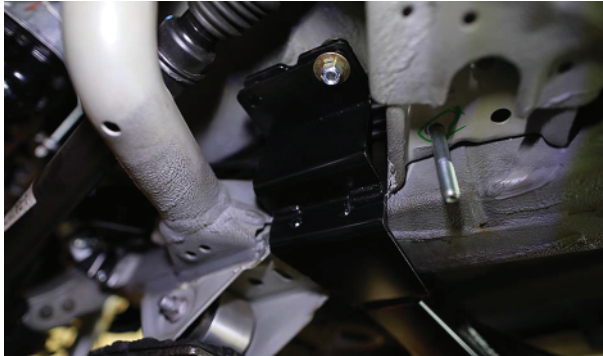
Step 4

Insert the 4 short 3/8" bolts through the top and bottom of the front brackets.



Step 5

Tighten the front bracket down.



Step 6

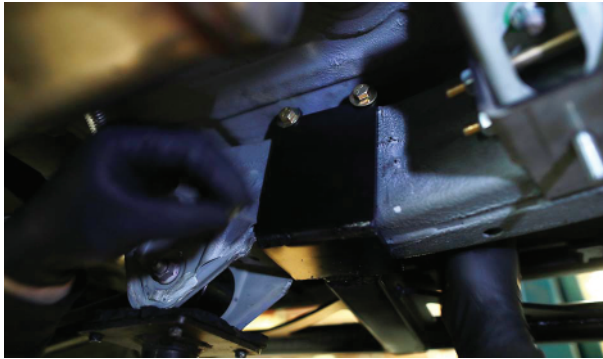
Tighten the rear bracket.



Installation for Passenger Side

Step 1

Lift slider into place on frame.



Step 2

Begin to insert bolts and washers into the brackets. The front bracket will require the 5/16" bolts to be inserted toward the outside as shown.



Step 3

Tighten all bolts.

