




# Suzuki Jimny 18+ Front Bumper Installation Instructions

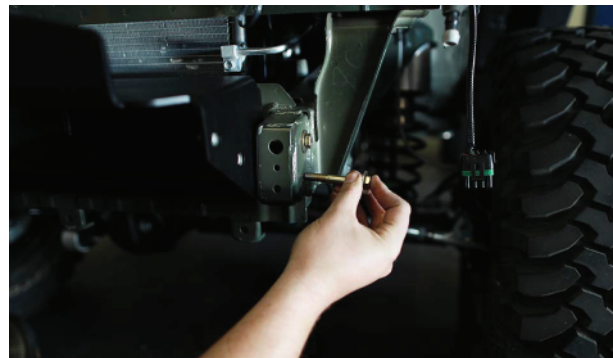
	<b>NOTICE</b> Read instructions completely before installing this product. Refer back to the instructions frequently during installation.		<b>CAUTION</b> Flying Object Hazard. Fluid Splash Hazard. Wear safety glasses at all times when working on vehicle.
 <b>WARNING:</b> Cancer and Reproductive Harm - <a href="http://www.P65Warnings.ca.gov">www.P65Warnings.ca.gov</a>			

## Step 1

Remove factory bumper.

## Step 2

Insert winch plate between frame end caps and use 3/8" hardware to hold bracket in place. Only hand tighten.

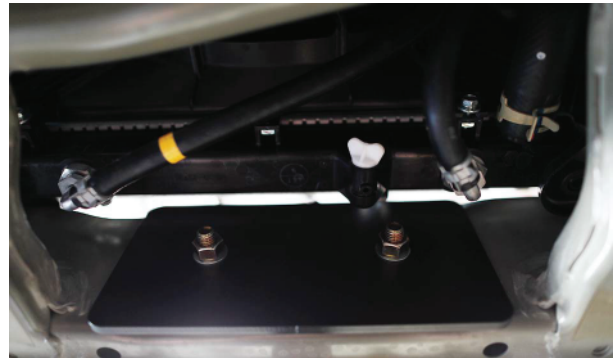


**LROR-307539-INS**



### Step 3

Insert ½" bolts and washer through center holes of winch bracket and clamping plate.



### Step 4

Center the winch plate on the vehicle and tighten the ½" hardware with the rear support plate as shown.



### Step 5

Tighten the 4x 3/8" bolts on the sides of the winch plate.

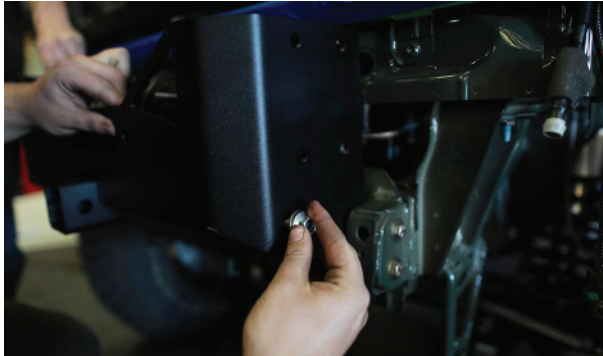


### Step 6

If you have a winch, install it now, once the center cap is installed you will not be able to attach a winch without removing the cap.

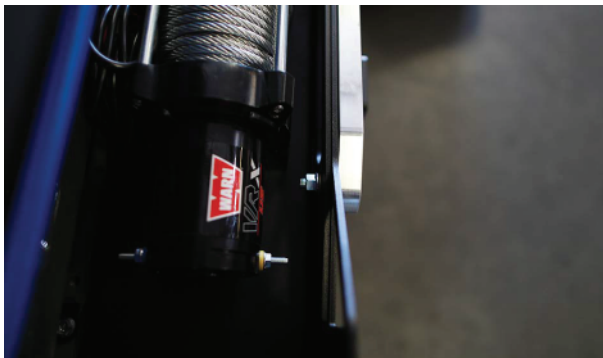
## Step 7

Insert 4x flange bolts on the sides of the center plate.



## Step 8

Center the cap and tighten the 2 flange bolts on the front of the cap. If you have a fairlead you should install it on those holes as well.



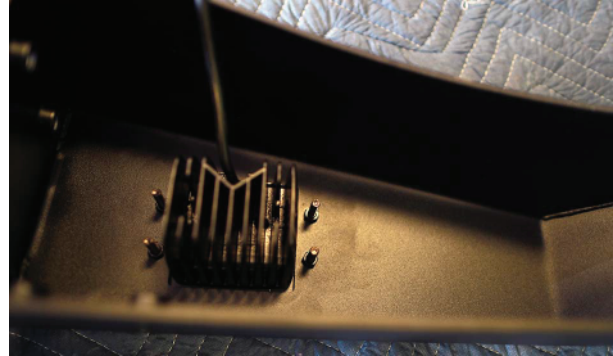
## Step 9

Tighten the flange bolts on the outside of the cap.



## Step 10

It's recommended you insert the LED light pods on the side pieces prior to installing the side pieces.



## Step 11

Hold up side piece to cap and use flange screws to attach as shown. Adjust as necessary and then tighten bolts.



## Step 12

Repeat the process on the opposite side.

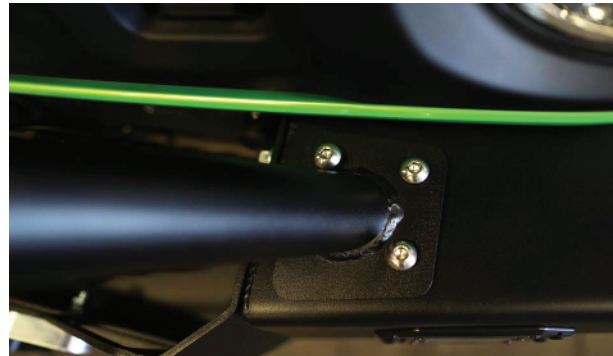


## Step 13

If you do not have a stinger, use the included plastic caps and insert them through the threaded holes on top of the side pieces to finish installation.

## Step 14

If you have a stinger, begin by aligning the stinger holes with the holes on the side pieces.



## Step 15

Use button head bolts to secure the stinger to the bumper sides, note: you may need to pry on the stinger in order to line up the bolt holes properly, this can be done with a large screw driver if you don't have the proper style pry bar.

