

Instructions Created by an:

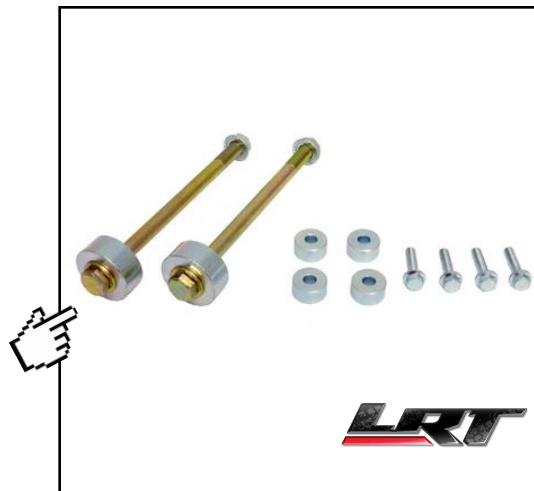


**Automotive
Service
Excellence**
MASTER AUTO TECHNICIAN



2005-Present Toyota Tacoma | 2003-Present 4Runner | 2007-2014 FJ Cruiser | 2003-Present Lexus GX Differential Drop Kit by Low Range Off-Road (SKU #LR-2GDDK)

Installation Instructions



CAUTION: Safety glasses should be worn at all times when working with vehicles and related tools and equipment.



**FOR ADDITIONAL COPIES OF THESE
AND OTHER INSTRUCTIONS GO TO:**
www.lowrangeoffroad.com and click on the
"TECH AND INSTRUCTIONS" tab.

Suggested Tools:

- Twin Post Lift (or Floor Jack)
- Transmission Jack (or 2 Jack Stands)
- Ratchet
- Sockets: 12 & 22mm
- Combination Wrenche: 19mm
- 1/2 Dr. Torque Wrench: up to 150 ft. lbs.
- Impact wrench, 1/2 Drive
- Impact Sockets: 12 & 22 mm
- Pry Bar (24")

General Note

The photographs for these instructions were taken with the vehicle placed on a twin post lift. However, this job could be done with a floor jack and jack stands. We also used power tools but, manual tools could be substituted and work reasonably well.



Step 1

Lift the vehicle on a twin post lift.

or

Lift the front of the vehicle with a floor jack and support it with (2) jack stands. Refer to **Figure A** for proper floor jack and jack stand positioning.

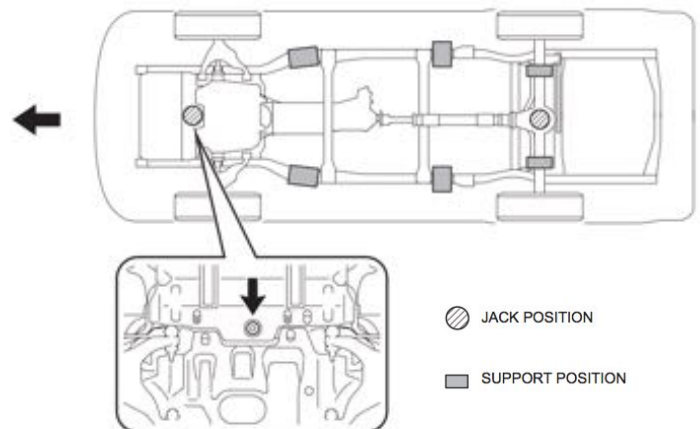
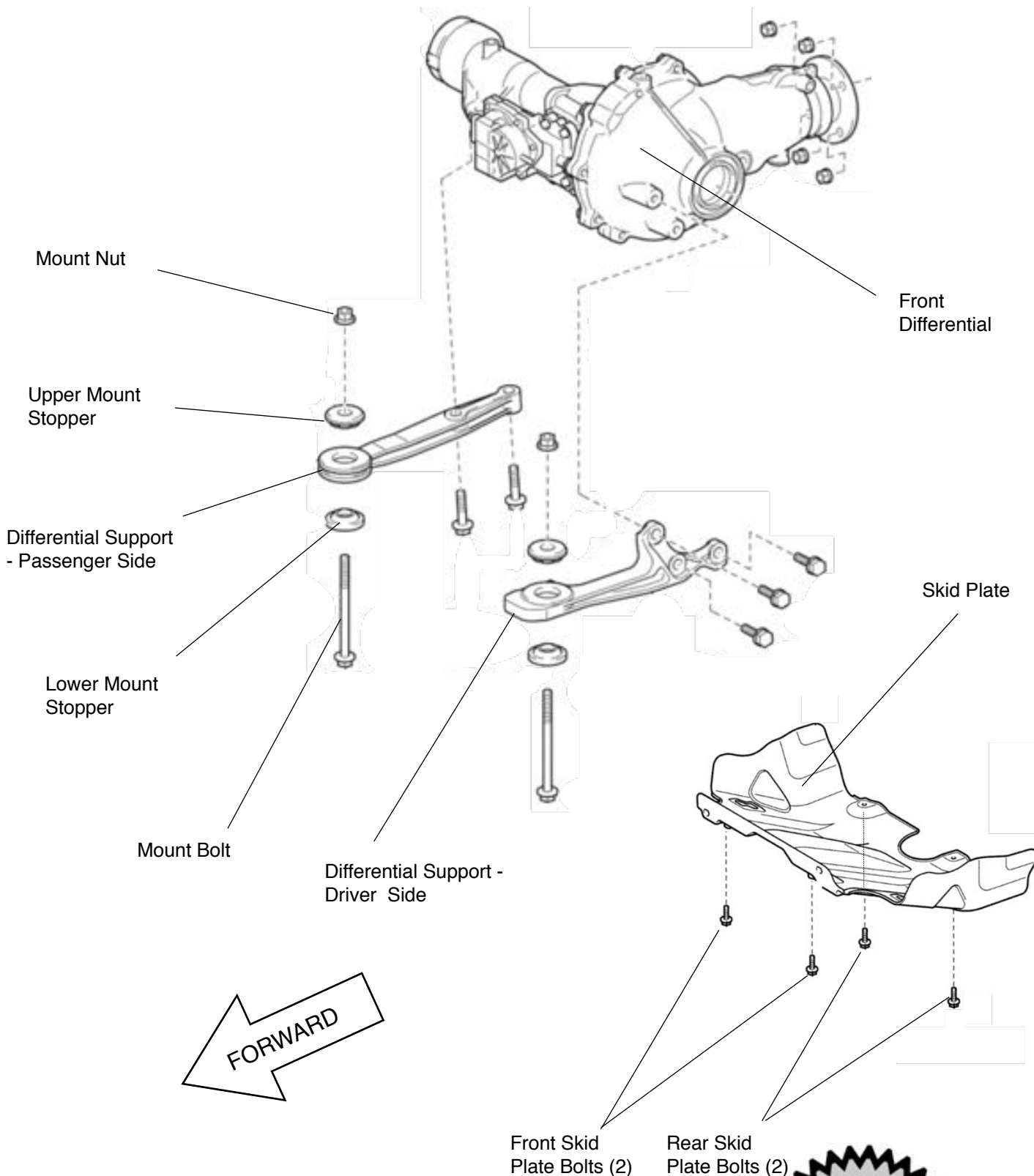


Figure A

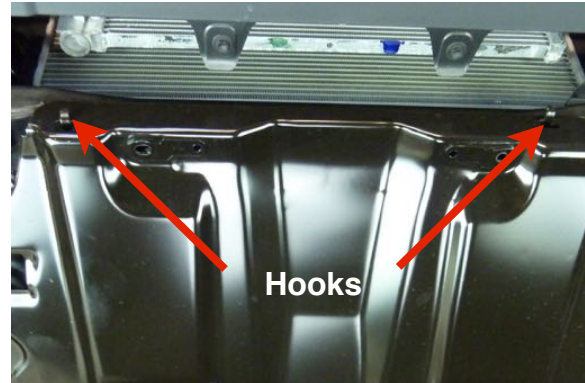
Front Differential Components





Step 1

Remove the front two skid plate bolts using a 12 mm socket.



Step 2

Let the front of the skid plate rest on the (2) hooks.



Step 3

While supporting the rear of the skid plate, remove the back (2) bolts using a 12 mm socket.



Step 4

Unhook the front of the skid plate, let it drop down, and set the skid plate aside.



Step 5

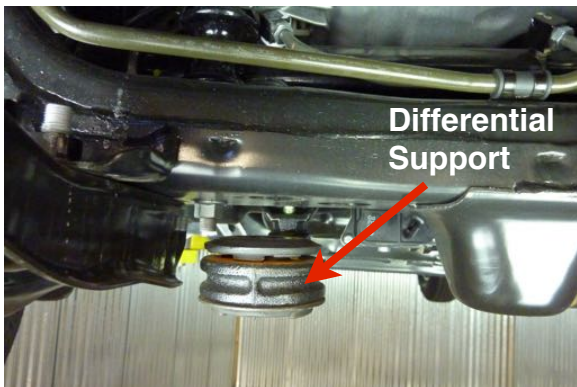
While holding the nut on the driver side support with a 19 mm box end wrench, remove the bolt using a 22 mm socket.

Note: Keep the large washer. It will be needed later on.



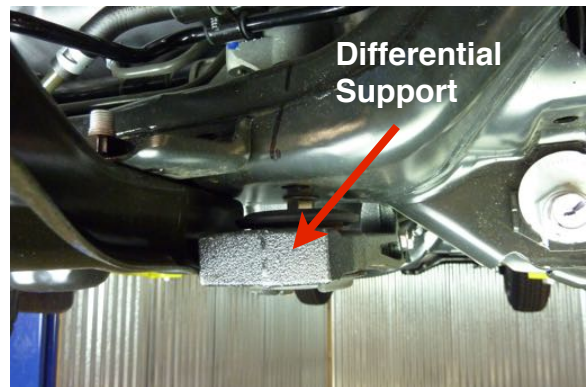
Step 6

Repeat the previous step on the passenger side.



Step 7

Let the passenger side differential support drop down.



Step 8

Let the driver side differential support drop down as well.





Step 9

Insert the supplied spacer between the passenger side differential mount and the frame and install the supplied hardware according to **Figure B**.

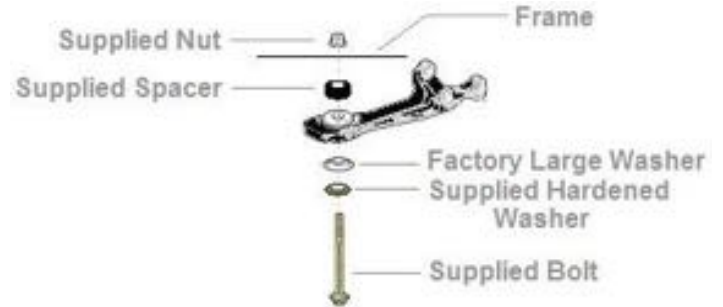


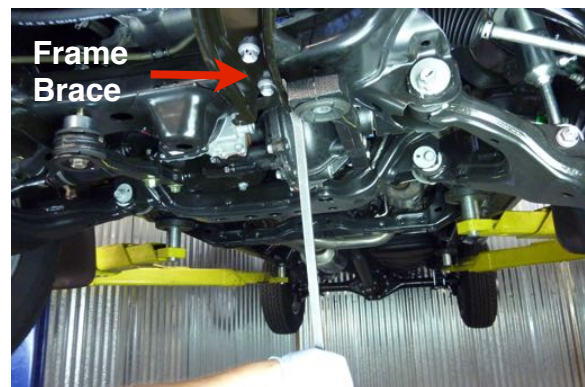
Figure B

This illustration shows the positioning of the hardware (supplied and factory) on the differential support.



Step 10

Install the supplied nut but leave it loose for now.



Tech Tip 10

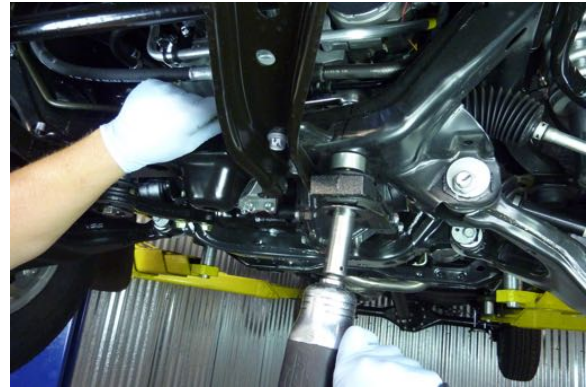
You may need to pry the driver side differential support away from the frame brace in order for it to drop down enough for the spacer to be installed.





Step 11

Insert the supplied spacer between the passenger side differential support and the frame and install the supplied bolt. (see **Figure B**) Install the supplied nut on the bolt.



Step 12

While holding the driver side nut with a 19 mm box end wrench, snug the bolt using a 19 mm socket. Torque the bolt to 101 ft. lbs.



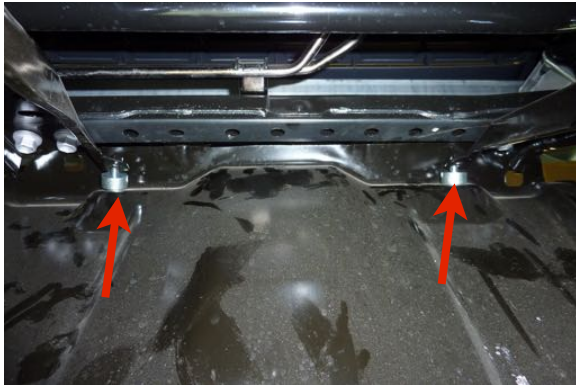
Step 13

While holding the passenger side nut with a 19 mm box end wrench, snug the bolt using a 19 mm socket. Torque the bolt to 101 ft. lbs.



Step 14

Hook the front of the skid plate as shown.



Step 15

Insert the (2) front supplied bolts from the bottom and place the supplied spacers on top of the skid plate as shown.



Step 16

While holding the skid plate in place, start the front (2) bolts. Leave them loose for now.



Step 17

Insert the (2) rear supplied bolts from the bottom with the supplied spacers on top the skid plate and start them as well.



Step 18

After all (4) bolts are started, snug them with a 12 mm socket and then torque them to 20 ft. lbs.





Congratulation!!!

You have finished the front differential and skid plate drop. It is wise to double check all the fasteners to insure you have not overlooked any of them. We hope these instructions have been helpful. Please feel free to contact us with any questions or concerns you may have.

As always, If you experience any difficulty during the installation of this product please contact Low Range Off-Road Technical Support at 801-805-6644 M-F 8am-5pm MST. Thank you for purchasing from Low Range Off-Road.



These instructions are designed as a general installation guide. Installation of many Low Range Off-Road products require specialized skills such as metal fabrication, welding and mechanical trouble shooting. If you have any questions or are unsure about how to proceed, please contact our shop at 801-805-6644 or seek help from a competent fabricator. Using fabrication tools such as welders, torches and grinders can cause serious bodily harm and death. Please operate equipment carefully and observe proper safety procedures.

Rock crawling and off-road driving are inherently dangerous activities. Some modifications will adversely affect the on-road handling characteristics of your vehicle. All products sold by Low Range Off-Road are sold for off road use only. Any other use or application is the responsibility of the purchaser and/or user. Some modifications and installation of certain aftermarket parts may under certain circumstances void your original dealer warranty. Modification of your vehicle may create dangerous conditions, which could cause roll-overs resulting in serious bodily injury or death. Buyers and users of these products hereby expressly assume all risks associated with any such modifications and use.

Revised 09/03/15© Copyright 2015 Low Range Off-Road, LC All Rights Reserved

