

INSTALLATION INSTRUCTIONS: '10-'16 4RUNNER ROCK SLIDERS

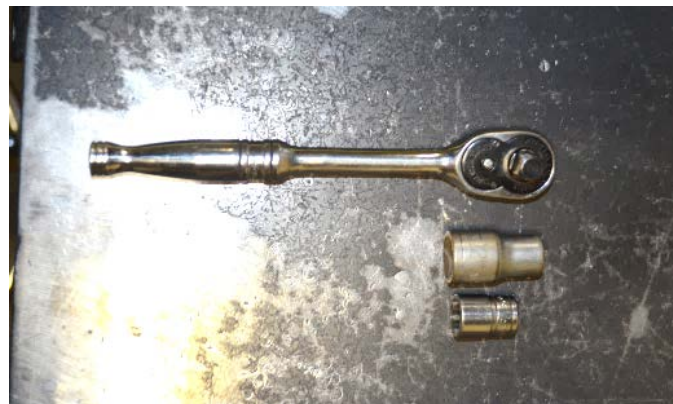


INSTALLATION DIFFICULTY: Medium

INSTALLATION TIME: 1-2 Hours

REQUIRED TOOLS: 12mm and 13mm Socket and Ratchet

INCLUDED HARDWARE: 20 8mm Hex Head bolts, 20 lock washers, 20 flat washers

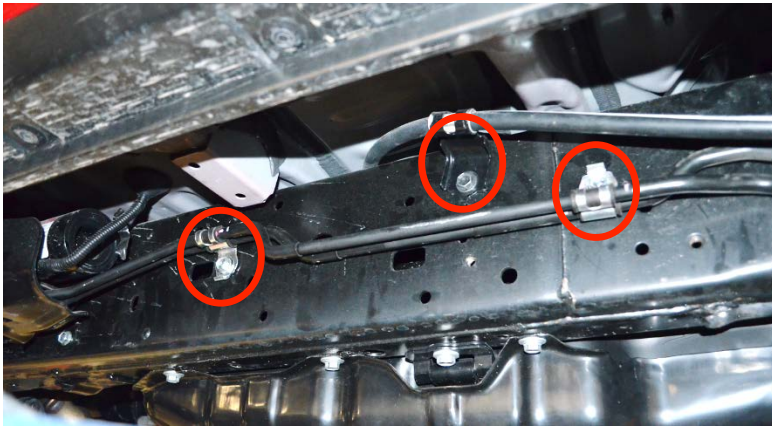


INCLUDED COMPONENTS:

L + R Pair All-Pro Off Road 4Runner Rock Sliders

PROCESS:

- 1.) Account for all assembly components and mounting hardware. Gather tools.
- 2.) If rock sliders were not ordered powder coated, prime and paint before installation. It is best to clean all surfaces with a degreaser such as alcohol, brake cleaner, acetone, etc. Prime sliders appropriately, and then paint with a rust inhibiting aerosol paint such as rustoleum. Check frame for any rust spots and paint accordingly.
- 3.) Once paint is dry, arrange rock slider along appropriate side of vehicle. Align it as best as possible and try to visualize which holes line up with the slider plates in the frame.
- 4.) Remove the brackets holding the KDSS lines to the frame and small skid plate protecting KDSS lines going under the frame. The factory bolts use 12mm socket and wrench.

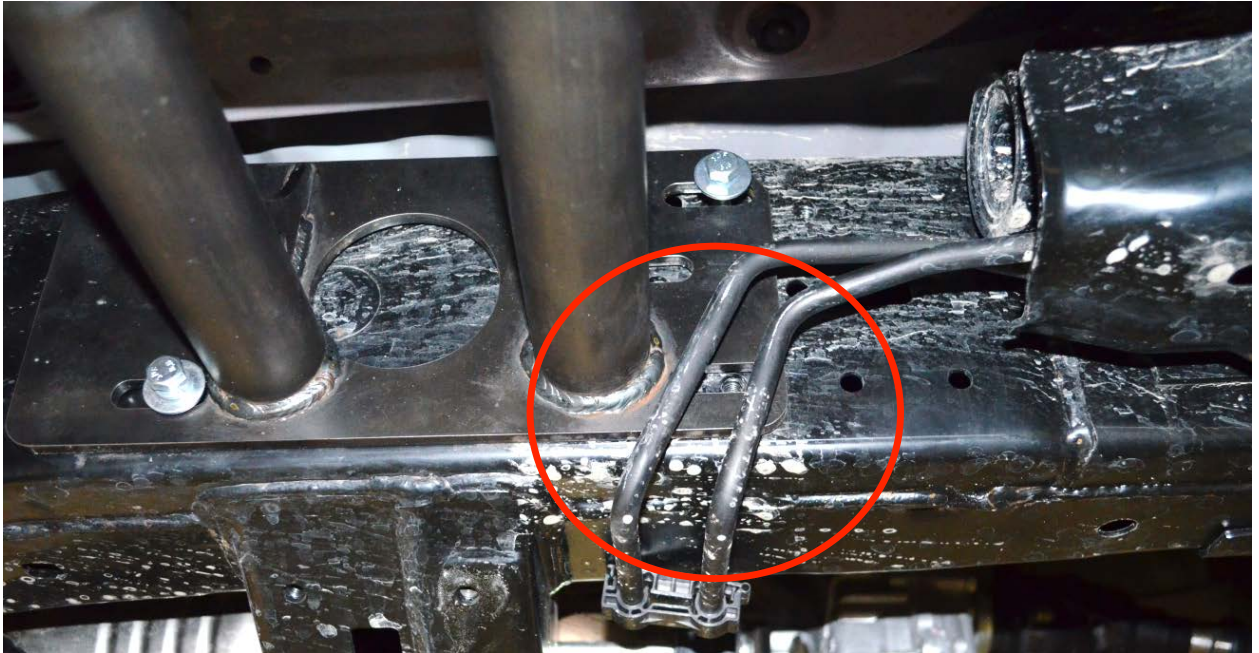


Shows KDSS skid removed from frame.

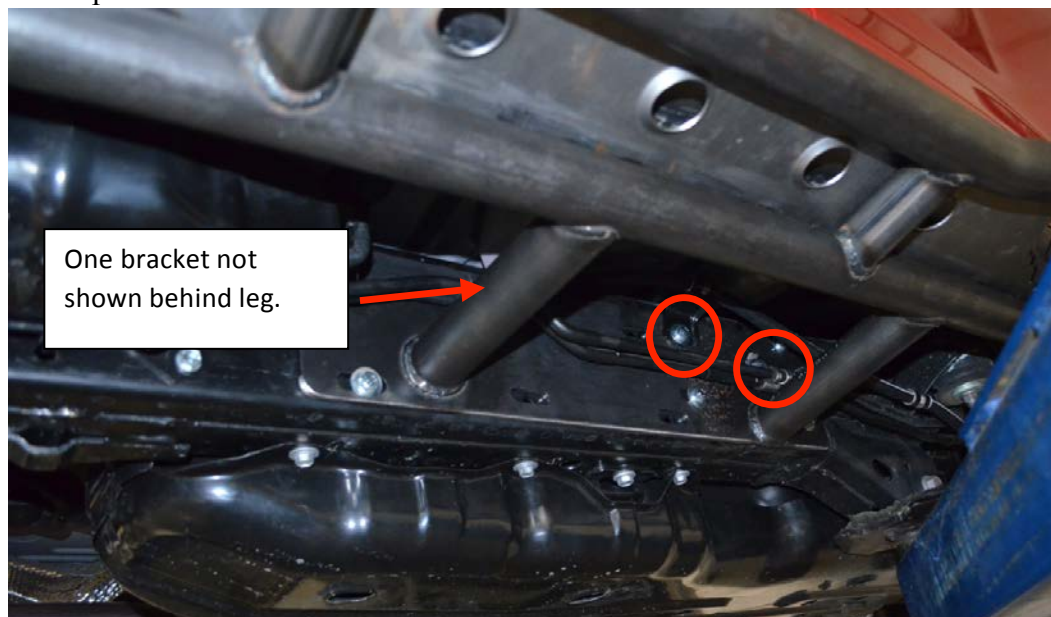


- 5.) Using jack stands or some other object to hold the slider in place, start trying to align holes. For these sliders, only holes tapped in the frame from the factory will be used. On the driver side, use 11 bolts and washers, on the passenger side, use remaining 9 bolts and washers.

- 6.) Start threading bolts in using a washer and lock washer between the head of the bolt and the slider plate. The front mounting plate will go under the KDSS lines. Leave them loose enough to allow final adjustment once all bolts are in. The bolts which come with All-Pro sliders require a 13mm socket and ratchet.



- 7.) On the driver side, the KDSS brackets removed in step 4 will be reinstalled on top of the rear slider plate.



- 8.) Once all bolts are in, adjust slider forward and backward to ensure no lines are being rubbed against. Once satisfied with alignment, tighten all bolts to torque spec.
- 9.) Reinstall KDSS skid.
- 10.) Repeat above steps on passenger side. For the passenger side, there will be no KDSS brackets or skid.
- 11.) It is recommended to check torque on bolts after first 100 miles of driving to ensure that nothing has shook loose.

TORQUE SPEC:

8mm x 1.25 bolts – 29 lb-ft