

POLARIS 2013-21 Ranger 4 Seater Roof

Thank you for choosing Rough Country for all your vehicle needs.

Please read instructions before beginning installation. Check the kit hardware against the kit contents shown below. Be sure you have all needed parts and know where they go.

If question exist, please call us @1-800-222-7023. We will be happy to answer any questions concerning this product.

Check all fasteners for proper torque. Check to ensure for adequate clearance between all components.

Periodically check all hardware for tightness.

KIT CONTENTS:

- Front Roof Panel x1
- Rear Roof Panel x1
- Middle Support x1
- Middle Support Clamps x2
- Rear Support x1

TOOLS NEEDED:

- 4mm Allen Wrench
- 10mm Socket/Wrench
- Drill
- 1/4" Drill Bit
- 25/64" Drill Bit

HARDWARE INCLUDED:

- 6mm x 30mm Button Head Bolts x15
- 6mm Flat Washers x23
- 6mm Lock Nuts x10
- 6mm Rivnuts x7
- Double-Sided Tape x1

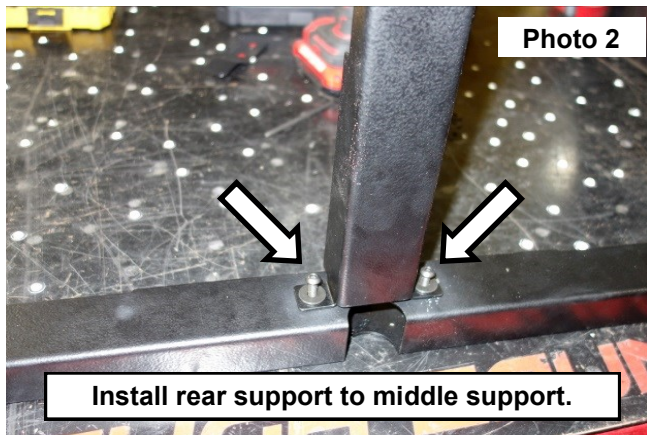


Torque Specs:

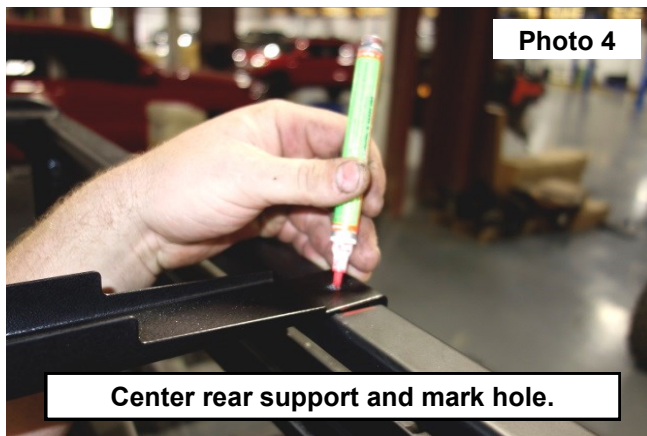
| Size | Grade 5 | Grade 8 | Size | Class 8.8 | Class 10.9 |
|-------|-----------|-----------|------|-----------|------------|
| 5/16" | 15 ft/lbs | 20ft/lbs | 6MM | 5ft/lbs | 9ft/lbs |
| 3/8" | 30 ft/lbs | 35ft/lbs | 8MM | 18ft/lbs | 23ft/lbs |
| 7/16" | 45 ft/lbs | 60ft/lbs | 10MM | 32ft/lbs | 45ft/lbs |
| 1/2" | 65 ft/lbs | 90ft/lbs | 12MM | 55ft/lbs | 75ft/lbs |
| 9/16" | 95 ft/lbs | 130ft/lbs | 14MM | 85ft/lbs | 120ft/lbs |
| 5/8" | 135ft/lbs | 175ft/lbs | 16MM | 130ft/lbs | 165ft/lbs |
| 3/4" | 185ft/lbs | 280ft/lbs | 18MM | 170ft/lbs | 240ft/lbs |

INSTALLATION INSTRUCTIONS

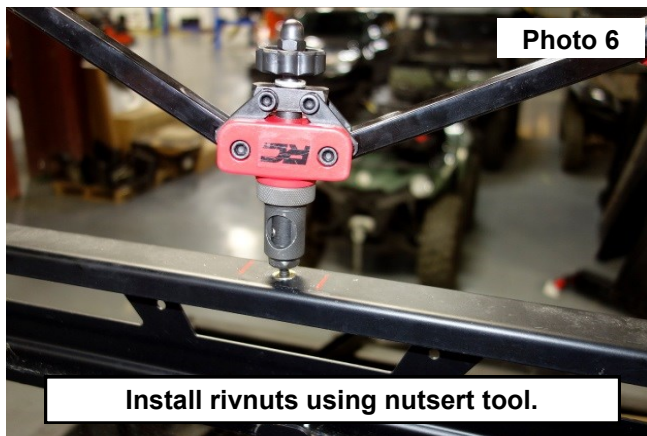
1. Install the supplied 6mm rivnuts in the middle roof support using a nutsert tool. **See Photo 1.**
2. Repeat for the remainder 5 holes along the middle support.
3. Install the rear support to the middle support with the supplied 6mm bolts using a 4mm Allen wrench. **See Photo 2.**



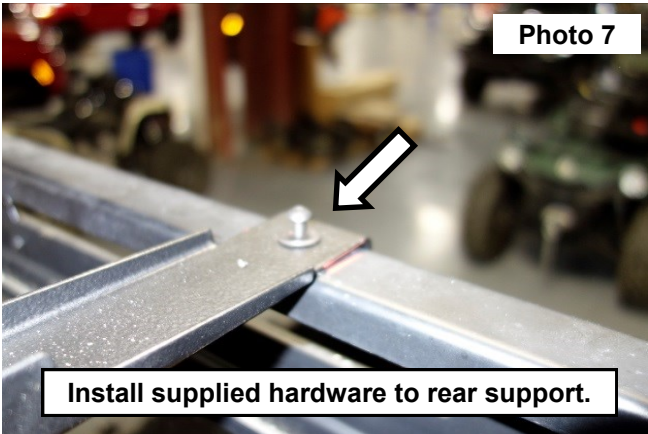
4. Place the roof supports on the cage. **See Photo 3.**
5. Center the rear support on the cage and mark the hole using a paint pen. **See Photo 4.**



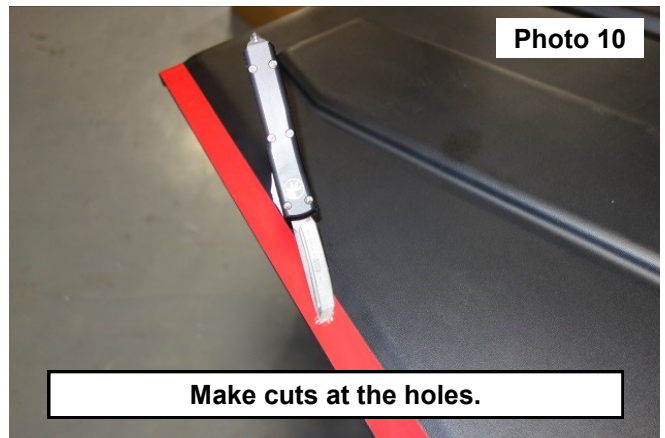
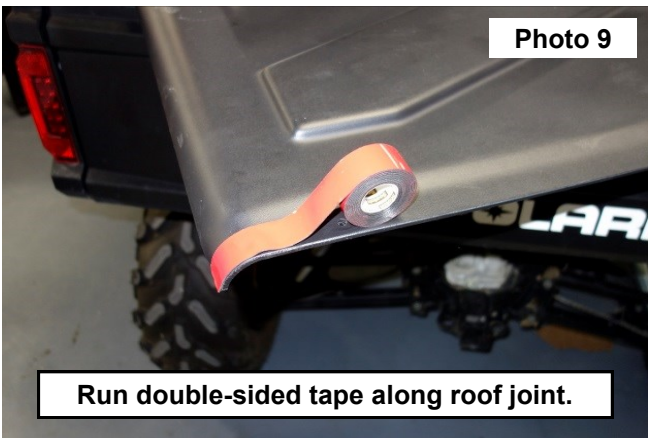
6. Drill the marked hole using a 25/64" drill bit. **See Photo 5.**
7. Install a supplied rivnuts using a nutsert tool. **See Photo 6.**



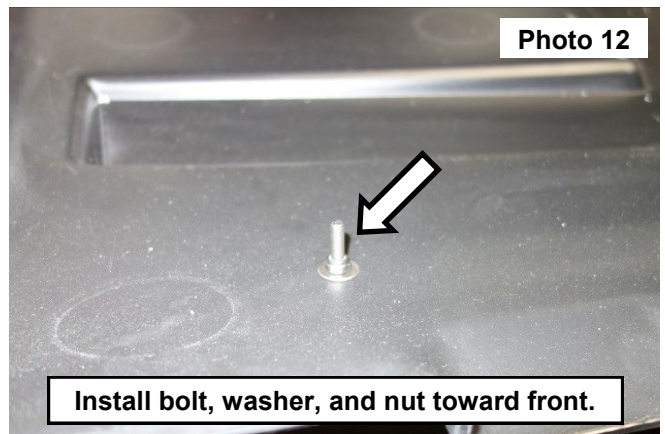
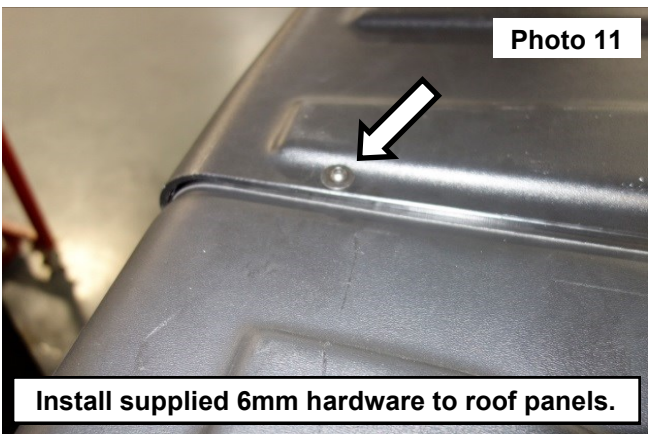
8. Install the supplied 6mm hardware to the rear roof support using a 4mm Allen wrench. **See Photo 7.**
9. Install the middle roof support clamps to the middle roof support using the supplied hardware. **See Photo 8.**
NOTE: Do not push the middle roof support against the lip or it may not reach across the vehicle--the support should have about 1/4" resting on each side.



10. Run the double-sided tape along the joint of the roof and make cuts at the holes for installing the bolts. **See Photo 9 and Photo 10.**



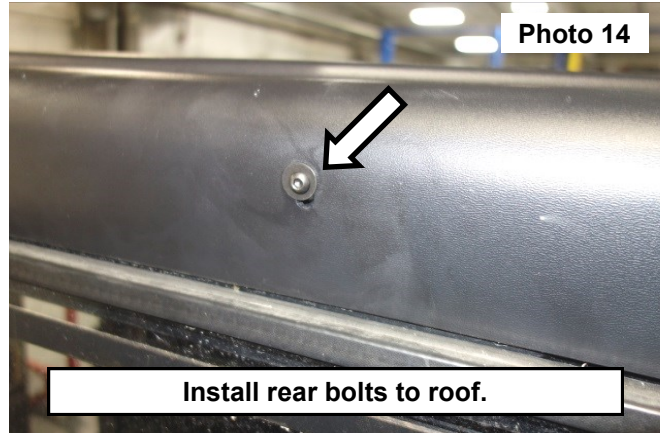
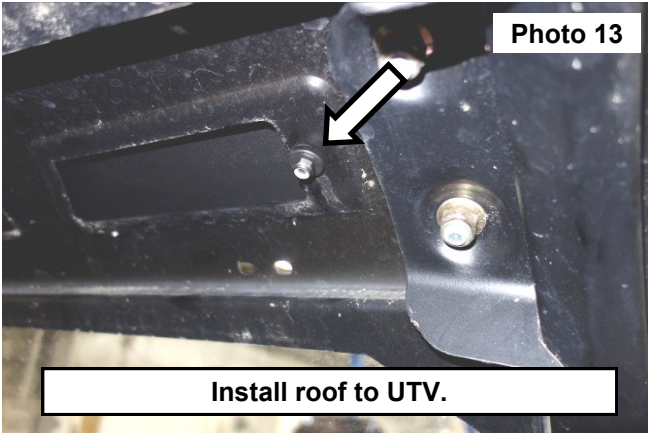
11. Install the supplied 6mm hardware to assemble the 2 roof panels.
12. Install the supplied 6mm bolts, washers, and nuts in the holes toward the front of the roof. **See Photo 12.**
NOTE: this washer and nut will be used as a spacer--another washer and nut will be used to secure the roof to the UTV.



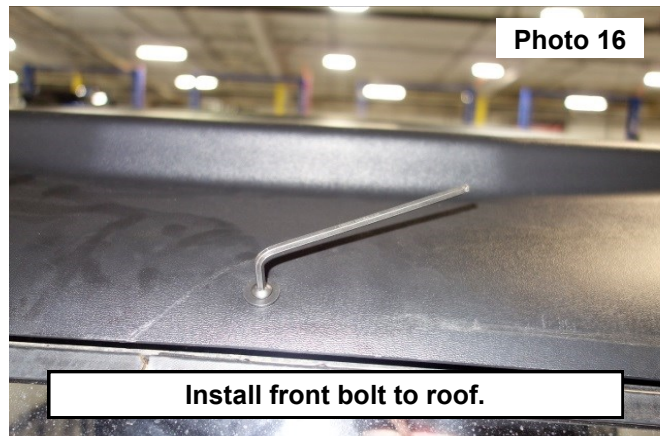
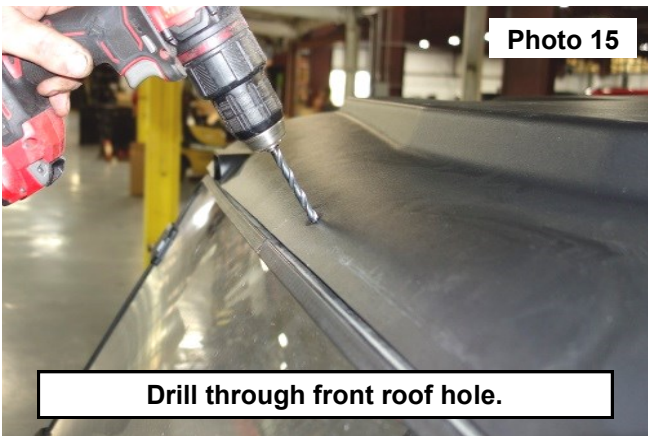
13. Install the roof to the UTV using a washer and nut on the same bolt that was install in the previous step.

See Photo 13.

14. Install the rear bolts to the roof. **See Photo 14.**



15. Drill through the front roof hole using a 1/4" drill bit and install the front bolt, washer, and nut to secure the front of the roof. **See Photo 15 and Photo 16.**



By purchasing any item sold by Rough Country, LLC, the buyer expressly warrants that he/she is in compliance with all applicable, State, and Local laws and regulations regarding the purchase, ownership, and use of the item. It shall be the buyers responsibility to comply with all Federal, State and Local laws governing the sales of any items listed, illustrated or sold. The buyer expressly agrees to indemnify and hold harmless Rough Country, LLC for all claims resulting directly or indirectly from the purchase, ownership, or use of the items.

