

2019-20XX DODGE 1500

BULL BAR INSTALLATION INSTRUCTIONS



SAFETY

Know Safety, no injury. Know injury, no safety. ~Author Unknown

If there are any questions, call 1-855-HHTOUGH

- **READ ALL SAFETY INSTRUCTIONS BEFORE INSTALLATION**
 - FOLLOW ALL INSTRUCTIONS FOR PROPER ASSEMBLY
 - WEAR APPROPRIATE EYE PROTECTION
 - EXERCISE CARE WHEN LIFTING COMPONENTS
 - USE APPROPRIATE TORQUE FOR BOLTS
 - BLUE THREAD LOCKING COMPOUND IS RECOMMENDED ON ALL BOLTS

SUGGESTED TORQUE VALUES FOR STEEL GRADE SAE 5 BOLTS

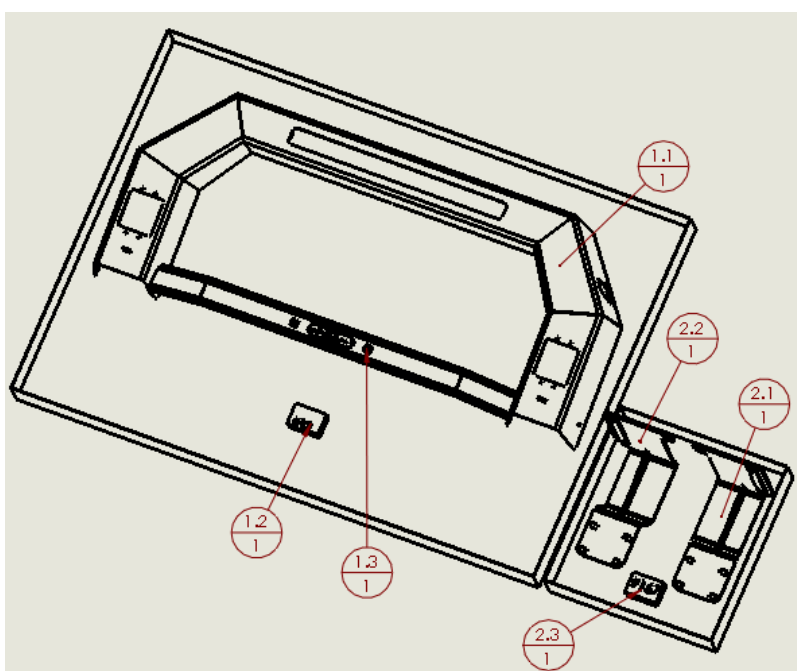
BOLT DIAMETER (INCH)	TREADS PER INCH	TORQUE (POUND-FEET)
1/4	20	7
5/16	18	14
3/8	16	25
7/16	14	40
1/2	13	60
9/16	12	88
5/8	11	120
3/4	10	200
7/8	9	302
1	8	466



600-56-0816

I. PARTS LIST

ITEM NO.	QTY.	PART NUMBER	DESCRIPTION
1	1	600-56-0866	Wide Bullbar (All Lights)
1.1	1	60P-56-0866	WIDE BULLBAR (ALL LIGHTS)
1.2	1	60K-56-0092	HARDWARE KIT #92 (B BAR MOUNT)
1.3	1	443-01-0086	LICENSE PLATE MOUNTING KIT
2	1	600-56-0874	BULL BAR MOUNT KIT
2.1	1	601-56-4919	RIGHT MOUNT WELDMENT
2.2	1	601-56-4923	LEFT MOUNT WELDMENT
2.3	1	60K-56-0167	HARDWARE KIT #167



REMOVE CONTENTS FROM BOX AND VERIFY ALL PARTS ARE PRESENT.

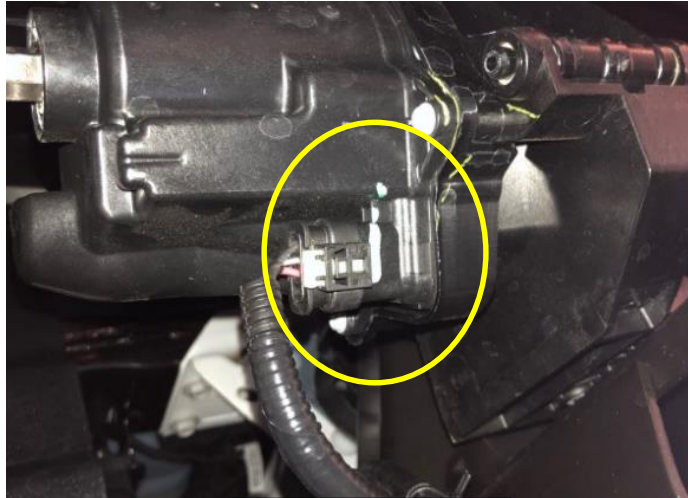
If there are any questions, call 1-855 HHTOUGH or email HHORDERS@hammerheadarmor.com

II. TOOL LIST

1. Basic Tool Kit
2. 9/16" socket
3. 13mm socket
4. 18mm socket
5. 18mm wrench
6. 21mm socket
7. 3" extension
8. Torx 40 Bit

III. VEHICLE PREPARATION

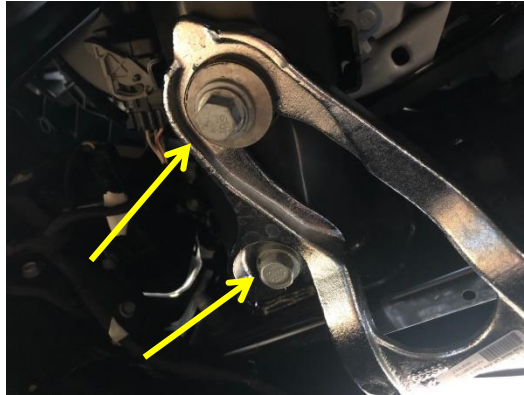
1. Park vehicle on level surface and engage parking brake.
2. Place a piece of cardboard underneath the front of the truck.
3. Unplug the OE underbody spoiler harness



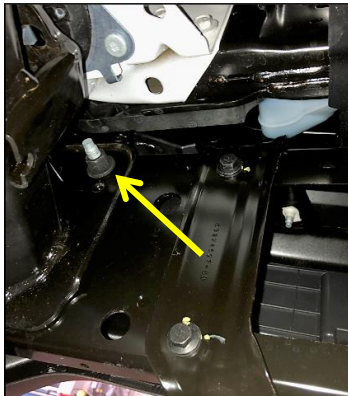
4. Using a 13mm socket, remove 2 nuts attaching OE underbody spoiler to truck frame (both sides)



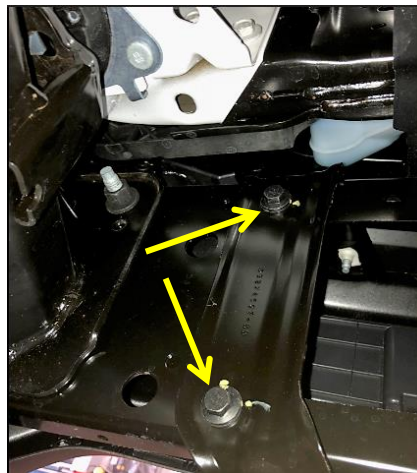
5. Remove the spoiler and set it and the OE hardware aside, it will be reinstalled later.
6. Using an 18mm and 21mm sockets, remove the 2 bolts attaching the tow hook to the frame. (both sides) Remove the tow hooks and set them aside, they will not be reused.



7. Using an 18mm wrench, remove the top nut attaching the bumper to the frame. (Both Sides)



8. Using a 13mm socket, remove the 2 bumper support bolts. (Both Sides)

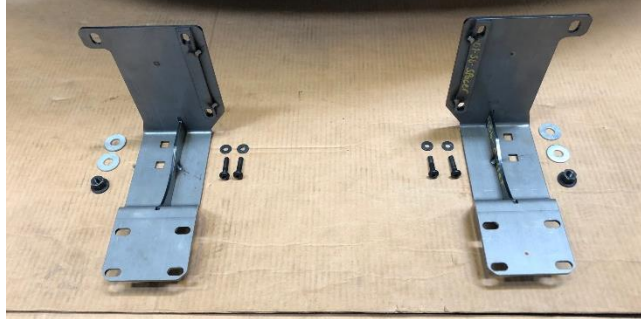


IV. BULL BAR PREPARATION

1. Install lights with provided hardware at this time (if applicable).
2. Install license plate mounting kit if desired.

V. BULL BAR INSTALLATION

1. Layout frame mounts, OE 18mm nut, and hardware kit #167 as shown:



2. Using hardware from Hardware kit #167, place 2 washers on each stud attaching the bumper to the frame. (both sides)



3. Install frame mounts through the tow hook cut outs from the backside of the bumper.
4. Using one Torx 40 bolt and one washer per hole, attach the frame mount to the bumper support braces. Replace the OE 18mm nut on the top stud. Do not fully tighten.

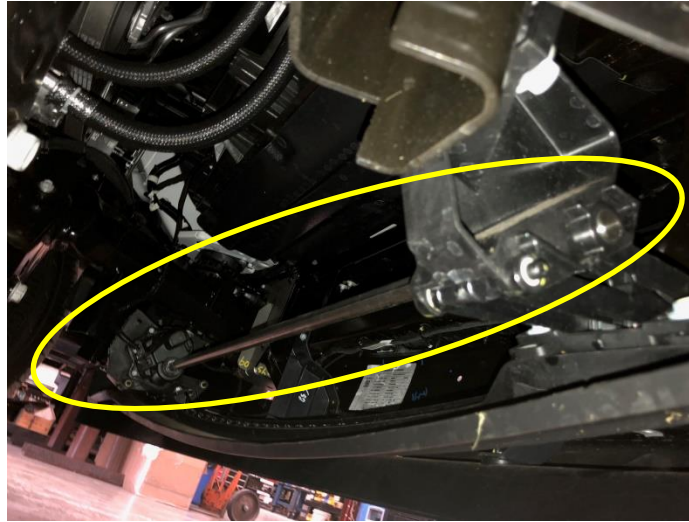




5. Lay down carpet or cardboard in front of the truck. Layout bull bar as shown. Use hardware kit #92 to attach the bull bar to the frame mounts. Use one 3/8"-16 bolt, one 3/8" lock washer, and one 3/8" flat washer per hole. Install all bolts. Using a 9/16" socket with 3" extension, tighten all bolts. Use torque values on page one.



6. Route light wires down the uprights and on top of the frame mount into the truck's bumper. Secure them with zip ties.
7. Have a friend help you align the bull bar. Push the top of the bull bar toward the truck and use an 18mm wrench and a Torx 40 to tighten the frame mount bolts. Use the torque values on page one. The bull bar needs to be close to the truck to allow sensor functionality.
8. Using a 13mm socket and OE hardware, reinstall the OE underbody spoiler.



VI. SPECIAL NOTES

This bull bar is sensor compatible, but it will need a little care to remain so. The bull bar must remain clean and free of any debris. Do not mount ANYTHING to the bull bar. Doing so may negatively affect sensor functionality.



**Congratulations! Your Installation is now complete.
Thank You for your purchase!**