

2018 – 20XX JEEP JL

REAR SPEAKER POD MOUNT INSTALLATION INSTRUCTIONS



SAFETY

Know Safety, no injury. Know injury, no safety. ~Author Unknown

If there are any questions, call 1-855-HHTOUGH

- **READ ALL SAFETY INSTRUCTIONS BEFORE INSTALLATION**
 - FOLLOW ALL INSTRUCTIONS FOR PROPER ASSEMBLY
 - WEAR APPROPRIATE EYE PROTECTION
 - EXERCISE CARE WHEN LIFTING COMPONENTS
 - USE APPROPRIATE TORQUE FOR BOLTS
 - BLUE THREAD LOCKING COMPOUND IS RECOMMENDED ON ALL BOLTS

California Proposition 65



WARNING

Cancer and Reproductive Harm

www.P65Warnings.ca.gov

DO NOT PAINT OVER THIS LABEL. REPLACE IF DAMAGED OR LOST

DKB150_00



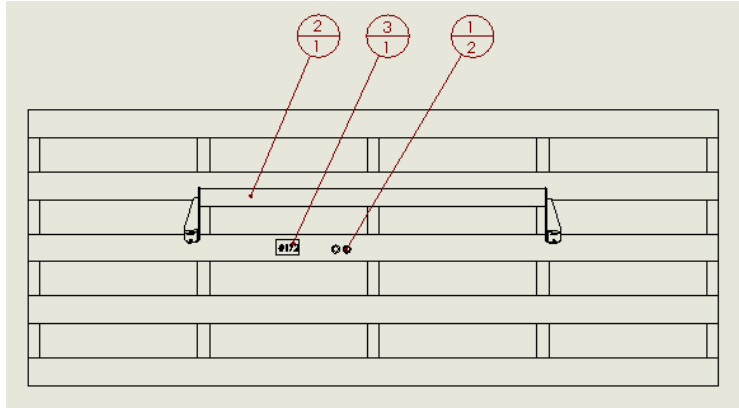
600-56-0831

Suggested Torque Values For Steel Grade 5 Standard Bolts		
BOLT DIAMETER (INCH)	THREADS PER INCH	TORQUE (POUND - FEET)
1/4	20	7
5/16	18	14
3/8	16	25
7/16	14	40
1/2	13	60
9/16	12	88
5/8	11	120
3/4	10	200
7/8	9	302
1	8	466

Suggested Torque Values For Steel Grade 8.8 Metric Bolts		
BOLT DIAMETER (mm)	THREAD PITCH (mm)	TORQUE (POUND-FEET)
6	1.0	7
8	1.25	16
10	1.5	32
12	1.75	55
14	2.0	88
16	2.0	140
18	2.5	195
20	2.5	275
22	2.5	375
24	3.0	475

I. PARTS LIST

ITEM NO.	QTY.	PART NUMBER	DESCRIPTION
1	2	443-02-3631	PUSH-IN BUMPER 1/2 IN HOLE SIZE
2	1	601-56-4490	JP JL REAR SPEAKER POD MOUNT
3	1	60K-56-0172	HARDWARE KIT #172



REMOVE CONTENTS FROM BOX AND VERIFY ALL PARTS ARE PRESENT.

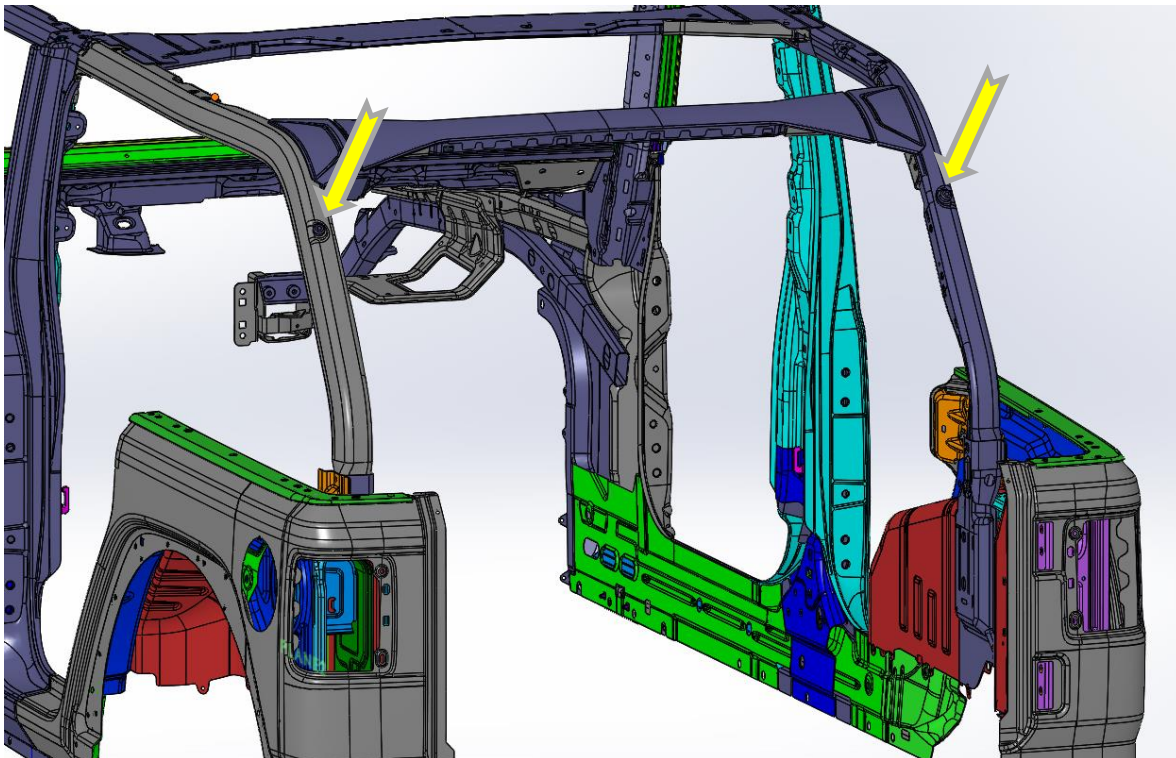
If there are any questions, call 1-855 HHTOUGH or email HHORDERS@hammerheadarmor.com

II. TOOL LIST

1. Basic Tool Kit
2. T-45 socket
3. 3/8"x16 tap

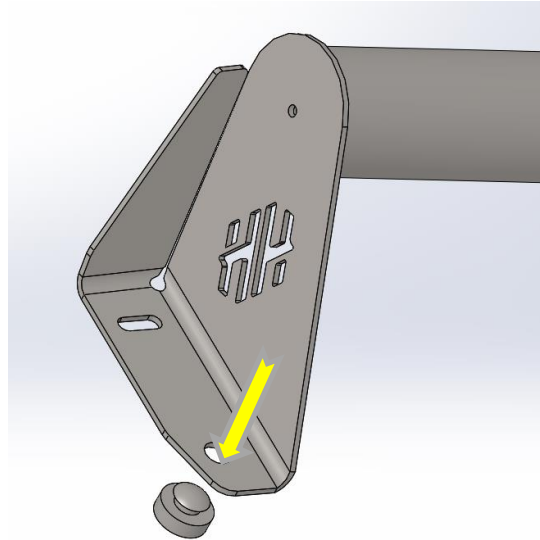
III. VEHICLE PREPARATION

1. Tap the 2 holes shown with the 3/8-16 tap. Tap no farther than 1"

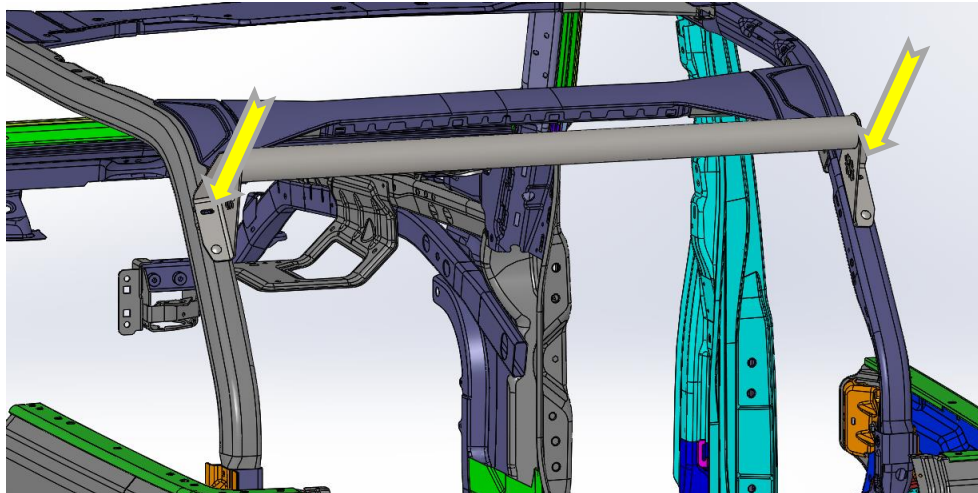


IV. REAR SPEAKER POD MOUNT INSTALLATION

1. Place the rubber bumpers in the indicated hole as shown. Do this for both sides



2. Using a Torx 45, mount the Speaker Pod Mount on rollcage with the two provided 3/8" bolts in the locations shown below. \





600-56-0831



**Congratulations! Your Installation is now complete.
Thank You for your purchase!**