

2018-20XX JEEP JL

A-PILLAR 51.5" LIGHT MOUNT INSTALLATION INSTRUCTIONS



SAFETY

Know safety, no injury. Know injury, no safety. ~Author Unknown

If there are any questions, call 1-855-HHTOUGH

- **READ ALL SAFETY INSTRUCTIONS BEFORE INSTALLATION**
 - FOLLOW ALL INSTRUCTIONS FOR PROPER ASSEMBLY
 - WEAR APPROPRIATE EYE PROTECTION
 - EXERCISE CARE WHEN LIFTING COMPONENTS
 - USE APPROPRIATE TORQUE FOR BOLTS

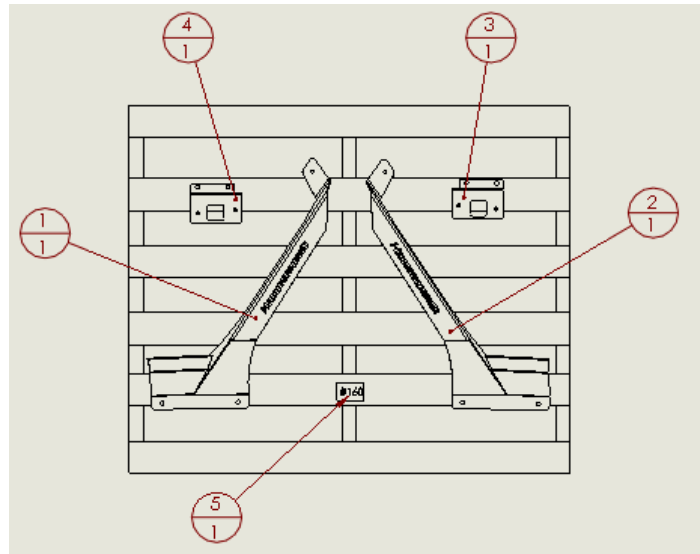
SUGGESTED TORQUE VALUES FOR STEEL GRADE SAE 5 BOLTS

BOLT DIAMETER (INCH)	TREADS PER INCH	TORQUE (POUND-FEET)
1/4	20	7
5/16	18	14
3/8	16	25
7/16	14	40
1/2	13	60
9/16	12	88
5/8	11	120
3/4	10	200
7/8	9	302
1	8	466

WARNING: Using an automatic car wash with A-pillar brackets installed will cause damage to your Jeep and/or the car wash.

I. PARTS LIST

ITEM NO.	Default/Qty	PART NUMBER	DESCRIPTION
1	1	601-56-4397	LEFT A-PILLAR LIGHT MOUNT
2	1	601-56-4398	RIGHT A-PILLAR LIGHT MOUNT
3	1	601-56-4442	LEFT MOUNT
4	1	601-56-4443	RIGHT MOUNT
5	1	60K-56-0160	HARDWARE KIT #160



REMOVE CONTENTS FROM BOX AND VERIFY ALL PARTS ARE PRESENT.
 If there are any questions, call 1-855-HHTOUGH or email
HHORDERS@hammerheadarmor.com

II. TOOL LIST

1. Basic tool set
2. Torx 40 socket
3. Torx 30 socket
4. Center punch
5. Drill
6. 7/16 drill bit or step bit
7. 1/8 drill bit
8. 9/16 wrench
9. 9/16 socket
10. Rotary tool with cutoff wheel

III. REMOVAL OF OEM BOLTS

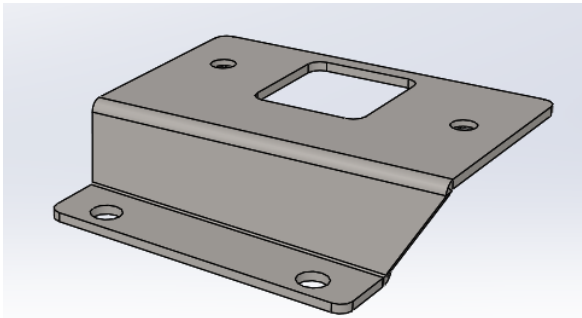
1. Using a Torx 40 socket remove all four of the bolts on the cowl then remove the cowl.



2. Repeat process for other side.

IV. INSTALLATION OF BRACE

1. Place brace as shown and use provided bolts to locate it. insert the bolts through the center cowl, through the provided brace, and into the OE brace as shown. This will locate the brace correctly.

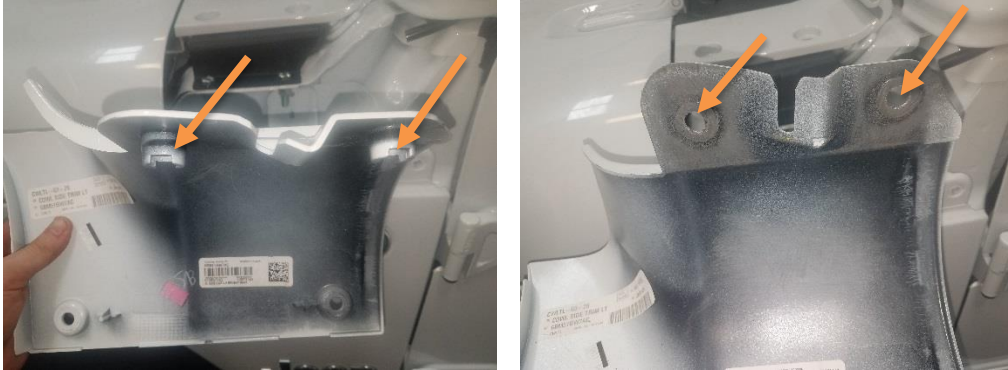


2. Mark holes and drill out to 7/16". It is recommended to center punch the hole, drill a pilot hole with the 1/8" bit, then use a step bit to drill out to 7/16".
3. Place brace back in place and use the method from step 1 to locate the brace again.



4. Use the two provided 3/8" bolts, 3/8" lock washer and 3/8" nut to attach the brace. Tighten bolts with a 9/16" wrench and 9/16" socket.
5. Remove the 6mm bolts from the top of the brace.

6. Cut the indicated extrusions off of the cowl. It is recommended to use a die grinder with a cut off wheel.



7. Lift the hood and remove the indicated plastic Christmas tree. Once it is removed you will be able to lift up on the center cowl and slide the side cowl in place.



8. Replace the Christmas tree. Do all previous steps for the other side.



2018-20XX Jeep JL

V. INSTALLATION OF HAMMERHEAD A-PILLAR BRACKETS

1. There are two different spacers in the Hardware kit. Install the tall spacers on the top two holes as shown.



2. Install the short spacers on the bottom two holes as shown.





2018-20XX Jeep JL

3. The A-pillar bracket goes over the spacer. Use the provided hardware to attach the bracket. Two 8mm bolts in the side and two 6mm bolts in the top using the Torx 40 and a Torx 30 socket.



4. Tighten all hardware
5. Do this for both the right and left side

VI. **INSTALLING THE LIGHTBAR (51.5" total width)**

1. Install the light bar according to its directions and hardware. If you purchased the Optional dampers install them on the back of the light bar. They will greatly reduce wind noise.



Congratulations! Your hammerhead windshield light mount installation is now complete.
Thank you for your purchase.