

2014-20XX, CHEVY/GMC, 1500

BULL BAR INSTALLATION INSTRUCTIONS



SAFETY

Know safety, no injury. Know injury, no safety. ~Author Unknown

If there are any questions, call 1-855-HHTOUGH

- **READ ALL SAFETY INSTRUCTIONS BEFORE INSTALLATION**

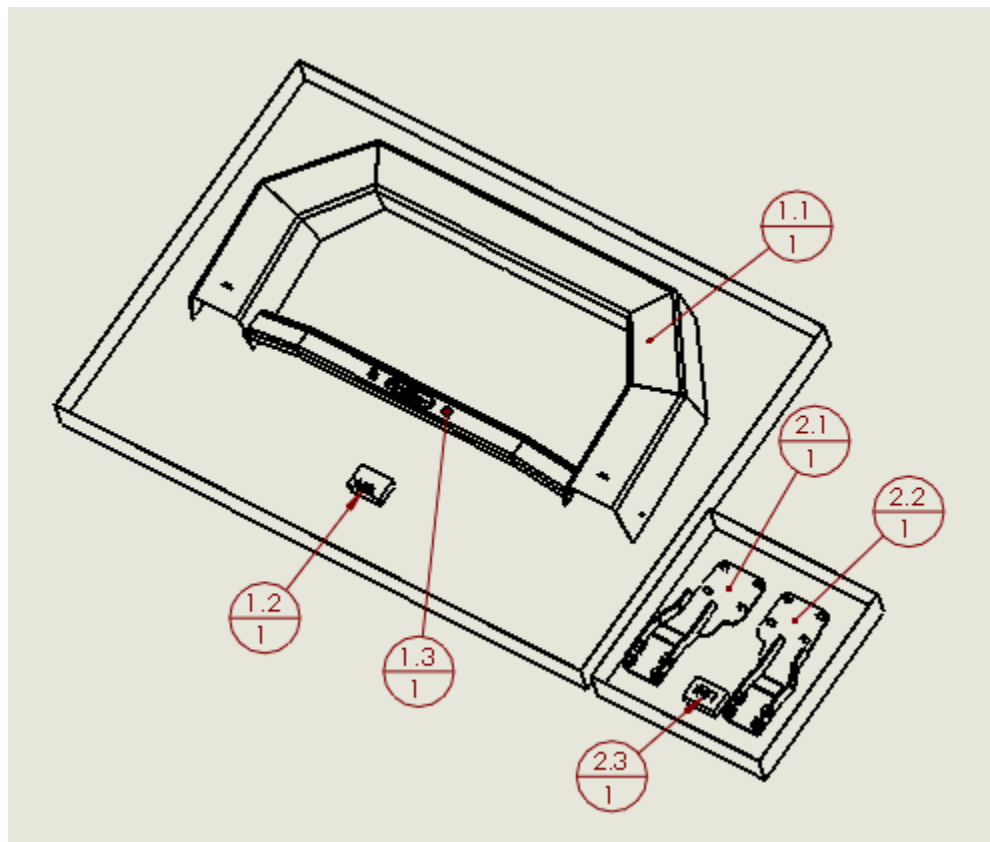
- FOLLOW ALL INSTRUCTIONS FOR PROPER ASSEMBLY
- WEAR APPROPRIATE EYE PROTECTION
- EXERCISE CARE WHEN LIFTING COMPONENTS
- USE APPROPRIATE TORQUE FOR BOLTS

SUGGESTED TORQUE VALUES FOR STEEL GRADE SAE 5 BOLTS

BOLT DIAMETER (INCH)	TREADS PER INCH	TORQUE (POUND-FEET)
1/4	20	7
5/16	18	14
3/8	16	25
7/16	14	40
1/2	13	60
9/16	12	88
5/8	11	120
3/4	10	200
7/8	9	302
1	8	466

I. PARTS LIST

ITEM NO.	QTY.	PART NUMBER	DESCRIPTION	
1	1	600-56-0865	Standard Bullbar (No Lights)	-
1.1	1	60P-56-0865	600-56-0865 POLISHED	-
1.2	1	60K-56-0092	HARDWARE KIT #92 (B BAR MOUNT)	-
1.3	1	443-01-0086	LICENSE PLATE MOUNTING KIT	-
2	1	600-56-0870	BULL BAR MOUNT KIT	-
2.1	1	601-56-3482	RIGHT FRAME MOUNT WELDMENT	-
2.2	1	601-56-3483	LEFT FRAME MOUNT WELDMENT	-
2.3	1	60K-56-0091	HARDWARE KIT #91	-



REMOVE CONTENTS FROM BOX AND VERIFY ALL PARTS ARE PRESENT.

If there are any questions, call 1-855-HHTOUGH or email HHORDERS@hammerheadarmor.com

II. TOOL LIST

1. Basic tool set
2. 3/4" wrench
3. 3/4" socket
4. 18mm wrench
5. 18mm socket
6. 9/16" socket
7. 3" extension

III. PREPARE BULL BAR FOR INSTALLATION

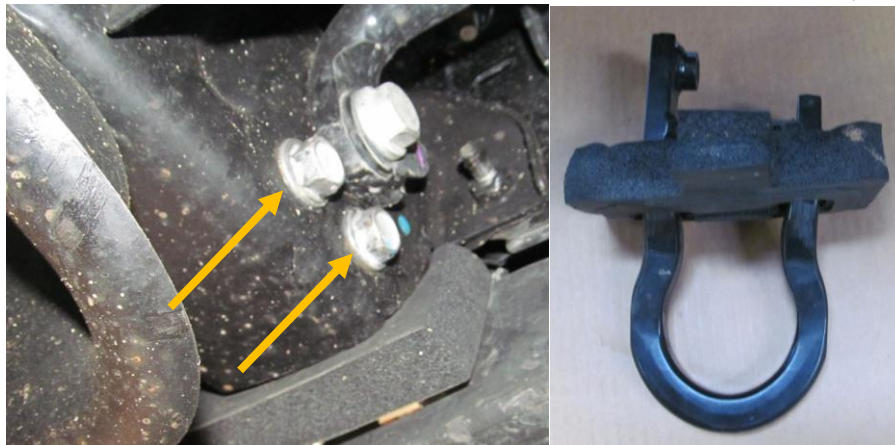
1. Install license plate mounting kit if desired.

IV. INSTALL BULL BAR – VEHICLES WITH TOW HOOKS

The tow hooks need to be removed to install the frame mounts. There are two ways to do this. One is easy and takes a few minutes, and one is complicated and takes a couple hours. The easy way requires you to cut a bolt. The complicated way requires you to remove the entire bumper to remove the left side tow hook bolt.

The Easy Way

1. Right side- Using an 18mm wrench and socket, remove the two bolts attaching the tow hook to the frame. Pull tow hook and foam out from the front. Set aside, it will not be reused.



2. Left side- Using an 18mm socket, remove the rear bolt attaching the tow hook to the frame. Using an 18mm socket and wrench remove nut from through bolt.
3. Cut bolt. Use appropriate PPE (safety equipment) according to tool manufacturer's recommendations. Pull tow hook and foam out from the front. Set aside, it will not be reused.
4. Proceed to Section V.

Optional Way – Remove and Replace OE bumper

Call or email for supplemental instructions.

V. INSTALLATION OF HAMMERHEAD BULLBAR

1. Lay out frame mounts and hardware kit #91 as shown.

2014-20XX, CHEVY/GMC, 1500



2. Install frame mount through bumper's tow hook cutouts. Use one ½"-13 bolt, one ½" lock washer and one ½" flat washer per hole. Hand tighten bolts.
3. Lay down carpet or cardboard in front of truck. Layout Bull Bar as shown. Use hardware kit # 92 to attach bull bar to frame mounts. Use one 3/8"-16 bolt, one 3/8" lock washer, and one 3/8" flat washer per hole. Install all bolts. Using a 9/16" socket with 3" extension, tighten all bolts. Use torque values on page one.
4. Route light wires down the uprights, and on top of the frame mounts into the truck's bumper. Secure them with zip ties.



5. Have a friend help you align the Bull Bar. Push top of Bull Bar toward truck. Using a ¾" socket and wrench, tighten frame mount bolts at this time. Use torque values on page one. Verify top of Bull Bar is level with ground. The Bull Bar needs to be close to the truck to allow sensor functionality.

VI. SPECIAL NOTES

This Bull Bar is sensor compatible, but it will need a little care to remain so. The Bull Bar must remain clean and free of any debris. Do not mount ANYTHING to the bull bar.



2014-20XX, CHEVY/GMC, 1500



Congratulations! Your product installation is now complete.
Thank you for your purchase.