

2015-20XX, CHEVY 2500

BULL BAR INSTALLATION INSTRUCTIONS



SAFETY

Know safety, no injury. Know injury, no safety. ~Author Unknown

If there are any questions, call 1-855-HHTOUGH

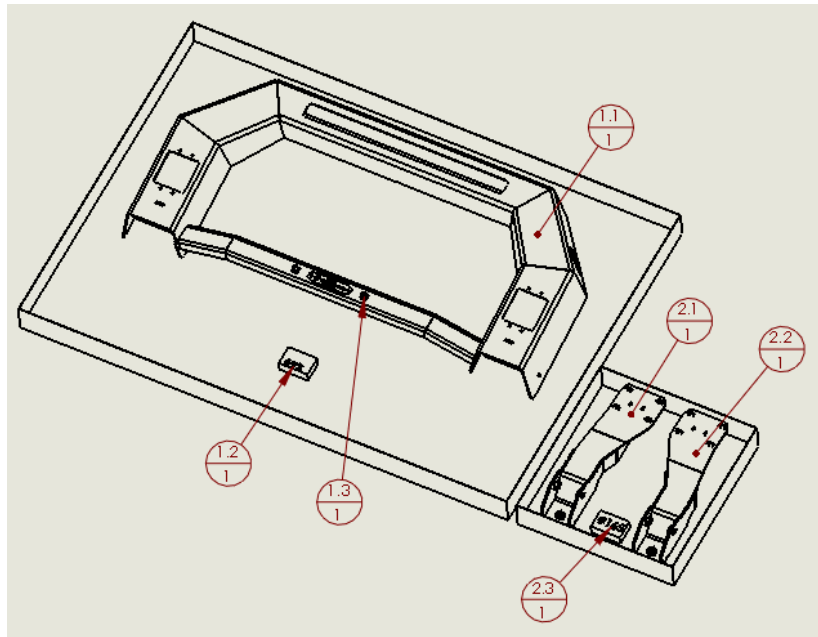
- **READ ALL SAFETY INSTRUCTIONS BEFORE INSTALLATION**
 - FOLLOW ALL INSTRUCTIONS FOR PROPER ASSEMBLY
 - WEAR APPROPRIATE EYE PROTECTION
 - EXERCISE CARE WHEN LIFTING COMPONENTS
 - USE APPROPRIATE TORQUE FOR BOLTS

SUGGESTED TORQUE VALUES FOR STEEL GRADE SAE 5 BOLTS

BOLT DIAMETER (INCH)	TREADS PER INCH	TORQUE (POUND-FEET)
1/4	20	7
5/16	18	14
3/8	16	25
7/16	14	40
1/2	13	60
9/16	12	88
5/8	11	120
3/4	10	200
7/8	9	302
1	8	466

I. PARTS LIST

ITEM NO.	QTY	PART NUMBER	DESCRIPTION
1	1	600-56-0864	Standard Bullbar (All Lights)
1.1	1	60P-56-0864	600-56-0864 POLISHED
1.2	1	60K-56-0092	HARDWARE KIT #92 (B BAR MOUNT)
1.3	1	443-01-0086	LICENSE PLATE MOUNTING KIT
2	1	600-56-0872	BULL BAR MOUNT KIT
2.1	1	601-56-3905	RIGHT MOUNT WELDMENT
2.2	1	601-56-3910	LEFT MOUNT WELDMENT
2.3	1	60K-56-0165	HARDWARE KIT #165



REMOVE CONTENTS FROM BOX AND VERIFY ALL PARTS ARE PRESENT.
If there are any questions, call 1-855-HHTOUGH or email
HHORDERS@hammerheadarmor.com

II. TOOL LIST

1. Basic tool set
2. 5/8" wrench
3. 5/8" socket
4. 18mm wrench
5. 18mm socket
6. 3" extension
7. 9/16" socket

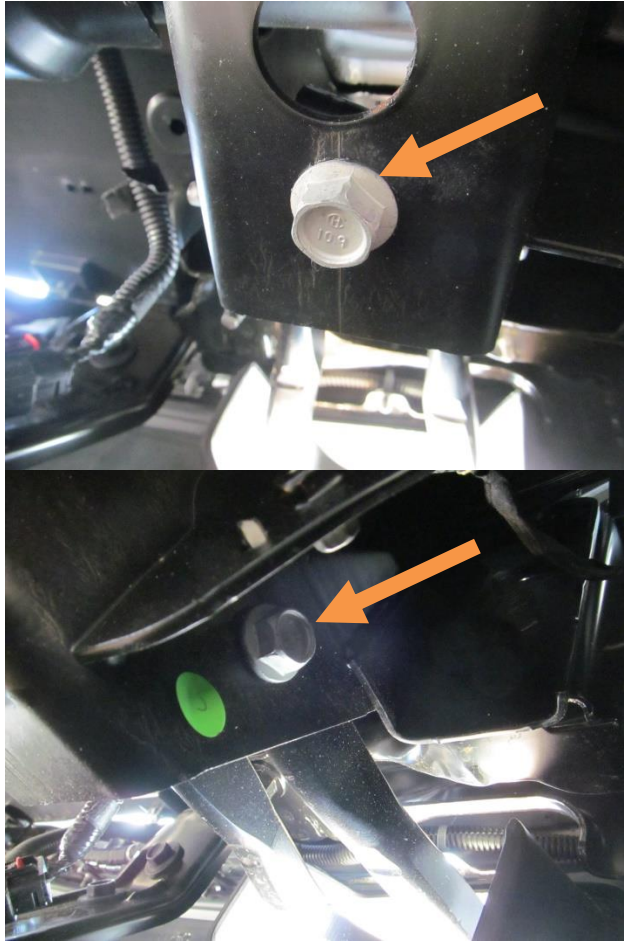
III. PREPARE BULL BAR FOR INSTALLATION

1. Install lights with provided hardware at this time.
2. Install license plate mounting kit if desired.

IV. **INSTALL BULL BAR**

The tow hooks need to be removed to install the frame mount

1. Locate the 2 tow hook bolts underneath the truck. (both sides)

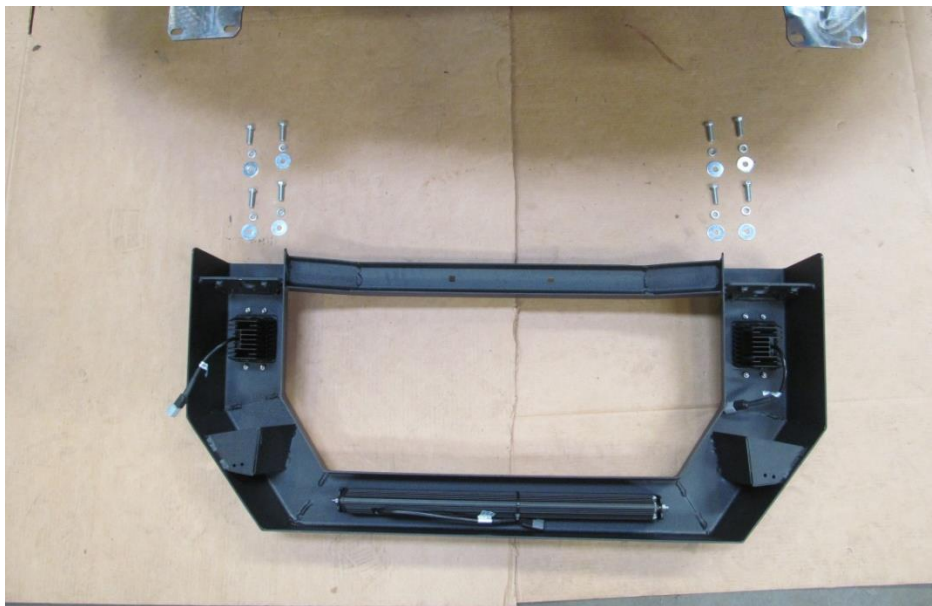


2. Using an 18mm socket and wrench, remove the tow hook bolts and the tow hooks. Set the hooks and OE bolts to the side, you will not use them again.
3. Layout frame mounts and hardware kit #165 as shown



4. Install frame mounts through the bumper's tow hook cut outs. Use one 7/16"-14 bolt, one 7/16" lock washer, and one 7/16" flat washer per hole. Hand tighten the bolts.

5. Lay down carpet or cardboard in front of truck. Lay Bull Bar as shown. Use hardware kit #92 to attach bull bar to frame mounts. Use one 3/8"-16 bolt, one 3/8" lock washer, and one 3/8" flat washer per hole. Install all bolts. Using a 9/16" socket with 3" extension, tighten all bolts. Use torque values on page one.



6. Have a friend help you align the Bull Bar. Push top of Bull Bar toward truck. Using a 5/8" socket and wrench, tighten the frame mount bolts at this time. Use torque values on page one. Verify top of Bull Bar is level with ground.



Congratulations! Your product installation is now complete.
Thank you for you purchase.