

2007-2017 Jeep Wrangler

2 DOOR STEP INSTALLATION INSTRUCTIONS



SAFETY

Know safety, no injury. Know injury, no safety. ~Author Unknown

- **READ ALL SAFETY INSTRUCTIONS BEFORE INSTALLATION**
 - FOLLOW ALL INSTRUCTIONS FOR PROPER ASSEMBLY
 - WEAR APPROPRIATE EYE PROTECTION
 - EXERCISE CARE WHEN LIFTING COMPONENTS
 - USE APPROPRIATE TORQUE FOR BOLTS
 - LOCKTITE OR REMOVABLE THREAD LOCKING COMPOUND IS RECOMMENDED ON ALL BOLTS

 - SUGGESTED TORQUE VALUES FOR STEEL GRADE SAE 5 BOLTS

BOLT DIAMETER (INCH)	TREADS PER INCH	TORQUE (POUND-FEET)
1/4	20	7
5/16	18	14
3/8	16	25
7/16	14	40
1/2	13	60
9/16	12	88
5/8	11	120
3/4	10	200
7/8	9	302
1	8	466



2007-2013 Jeep 2 Door Steps

I. PARTS LIST

<u>QUANTITY</u>	<u>PART NUMBER</u>	<u>DESCRIPTION</u>
1	600-56-0236	PASSENGER SIDE STEP
1	600-56-0237	DRIVER SIDE STEP

II. TOOL LIST

1. 18mm socket
2. Ratchet
3. Torque wrench (do not remove bolts with torque wrench)

III. INSTALLATION OF HAMMERHEAD STEPS

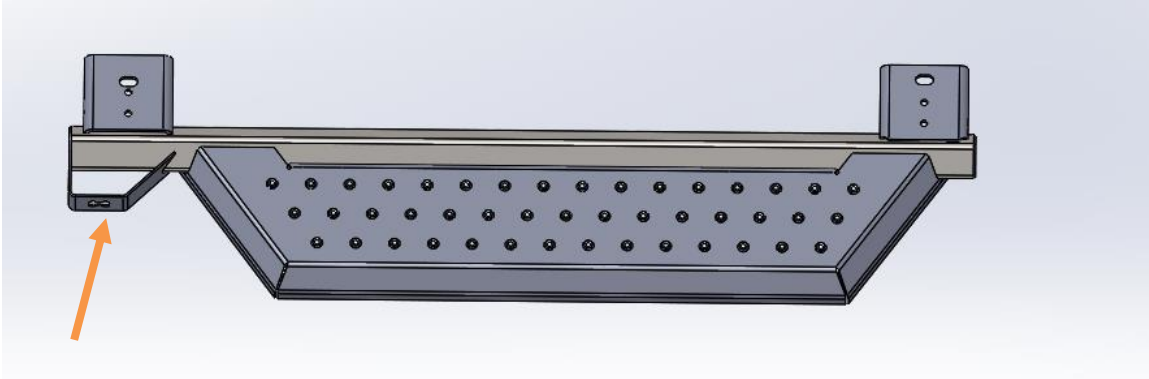
1. Remove OE cab bolts with 18mm socket and ratchet.





2007-2013 Jeep 2 Door Steps

2. Layout Driver side step under Jeep. (0237) The bottle opener goes toward the front.
- 3.



4. Install step with OE hardware. (This step is much easier with a friend to help.)
5. Repeat steps 1-3 on Passenger side.
6. Torque all cab bolts to 50 lb/ft.



2007-2013 Jeep 2 Door Steps

CONGRATULATIONS!!