

2007-2016 JEEP JK

WINDSHIELD LIGHT MOUNT INSTALLATION INSTRUCTIONS



SAFETY

Know safety, no injury. Know injury, no safety. ~Author Unknown

If there are any questions, call 1-855-HHTOUGH

- **READ ALL SAFETY INSTRUCTIONS BEFORE INSTALLATION**
 - FOLLOW ALL INSTRUCTIONS FOR PROPER ASSEMBLY
 - WEAR APPROPRIATE EYE PROTECTION
 - EXERCISE CARE WHEN LIFTING COMPONENTS
 - USE APPROPRIATE TORQUE FOR BOLTS

SUGGESTED TORQUE VALUES FOR STEEL GRADE SAE 5 BOLTS

BOLT DIAMETER (INCH)	TREADS PER INCH	TORQUE (POUND-FEET)
1/4	20	7
5/16	18	14
3/8	16	25
7/16	14	40
1/2	13	60
9/16	12	88
5/8	11	120
3/4	10	200
7/8	9	302
1	8	466

WARNING: Going through an automatic car wash with A-pillar brackets installed on a Jeep could lead to a possible damage to the vehicle and/or the car wash.



2007-2016 Jeep JK

I. PARTS LIST

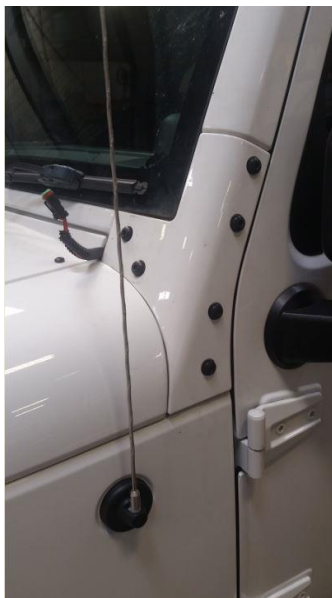
<u>QUANTITY</u>	<u>PART NUMBER</u>	<u>DESCRIPTION</u>	<u>CHECKOFF</u>
1	601-56-1288	RIGHT WINDSHILED LIGHT MOUNT	
1	601-56-1289	LEFT WINDSHILED LIGHT MOUNT	
1	601-56-1900	VIRTICAL FOAM LEFT	
1	601-56-1901	VIRTICAL FOAM RIGHT	
1	601-56-1902	HORIZONTAL FOAM LEFT	
1	601-56-1903	HORIZONTAL FOAM LEFT	
12	319-12-0016	REPLACEMENT BOLT	

II. TOOL LIST

1. Basic tool set
2. Torx 40 socket
3. Drill
4. ½ drill bit

III. REMOVAL OF OEM BOLTS

1. Using a Torx 40 socket remove all six of the bolts on the windshield bracket.
2. Remove the windshield bracket.
3. Repeat process for other side.



IV. INSTALLATION OF FOAM

1. In the kit are 4 pieces of foam with a sticky backing. Peel off the sticky backing and press onto WINDSHIELD LIGHT MOUNT as shown
2. Do this for both the right and left side



There are two methods of wiring the light bar, one requires drilling, and the other does not.

V. INSTALLATION OF HAMMERHEAD LIGHT BAR MOUNTS WITH DRILL WIRING METHOD.

1. Begin by drilling a $\frac{1}{2}$ " hole in the left side windshield bracket for the wiring. Following the provided diagram
2. Deburr hole to eliminate sharp edges



3. Route the wire for the light bar through the jeep as shown.



4. Route the wire through the new hole in the left windshield bracket and place the windshield bracket back on the jeep.



5. Place the LEFT WINDSHILED LIGHT MOUNT over the original windshield bracket, running the wire up the light mount through the channel shown.
6. Place all new torx 40 bolts in place half-way, starting with the inside two.



VI. INSTALLATION OF HAMMERHEAD LIGHT BAR MOUNTS WITH NO DRILL WIRING METHOD.

1. Route the wire through the jeep as shown.



2. Do not bolt down yet. Place the original windshield bracket and the LEFT WINDSHIELD LIGHT MOUNT onto the jeep. Run the wire out of the engine compartment and up the channel in the LEFT WINDSHIELD LIGHT MOUNT as shown.



3. Finish running the wiring by routing it all the way up the channel in the LEFT WINDSHIELD LIGHT MOUNT and out the top.

2007-2016 Jeep JK



4. Flush up the wiring at the bottom as shown.
5. Place all new torx 40 bolts in place half-way, starting with the inside two.





2007-2016 Jeep JK

VII. FINISHING INSTALL WITH LIGHT BAR

1. Move to the right side and place the RIGHT WINDSHILED LIGHT MOUNT over the windshield bracket and put in all bolts half way starting with the inside two.
2. Tighten all bolts till they are about $\frac{3}{4}$ of the way in.
3. Install light bar with its included hardware and according to its instructions onto the Hammerhead light bar mount.
4. Finish by tightening all torx bolts on the light bar mounts.



Congratulations! Your hammerhead windshield light mount installation is now complete.
Thank you for your purchase.



2007-2016 Jeep JK