

## 2014-20XX Chevy/GMC 1500 CC SWB WTW Bed Access

### RUNNING BOARD INSTALLATION INSTRUCTIONS



## SAFETY

Know safety, no injury. Know injury, no safety. ~Author Unknown

- **READ ALL SAFETY INSTRUCTIONS BEFORE INSTALLATION**
  - FOLLOW ALL INSTRUCTIONS FOR PROPER ASSEMBLY
  - WEAR APPROPRIATE EYE PROTECTION
  - EXERCISE CARE WHEN LIFTING COMPONENTS
  - USE APPROPRIATE TORQUE FOR BOLTS
  - BLUE THREAD LOCKING COMPOUND IS RECOMMENDED ON ALL BOLTS





## 2014-20XX Chevy/GMC 1500

BOLT DIAMETER (INCH)	THREADS PER INCH	TORQUE (POUND - FEET)
1/4	20	7
5/16	18	14
3/8	16	25
7/16	14	40
1/2	13	60
9/16	12	88
5/8	11	120
3/4	10	200
7/8	9	302
1	8	466

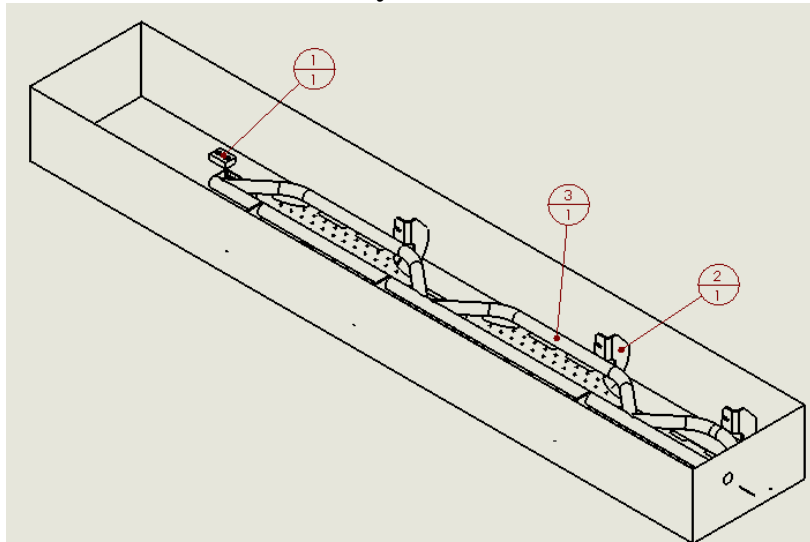
BOLT DIAMETER (mm)	THREAD PITCH (mm)	TORQUE (POUND-FEET)
6	1.0	7
8	1.25	16
10	1.5	32
12	1.75	55
14	2.0	88
16	2.0	140
18	2.5	195
20	2.5	275
22	2.5	375
24	3.0	475

## I. PARTS LIST

ITEM NO.	QTY.	PART NUMBER	DESCRIPTION
1	1	60K-56-0141	HARDWARE KIT #141
2	1	60P-56-0298	RIGHT RUNNING BOARD
3	1	60P-56-0299	LEFT RUNNING BOARD



2014-20XX Chevy/GMC 1500

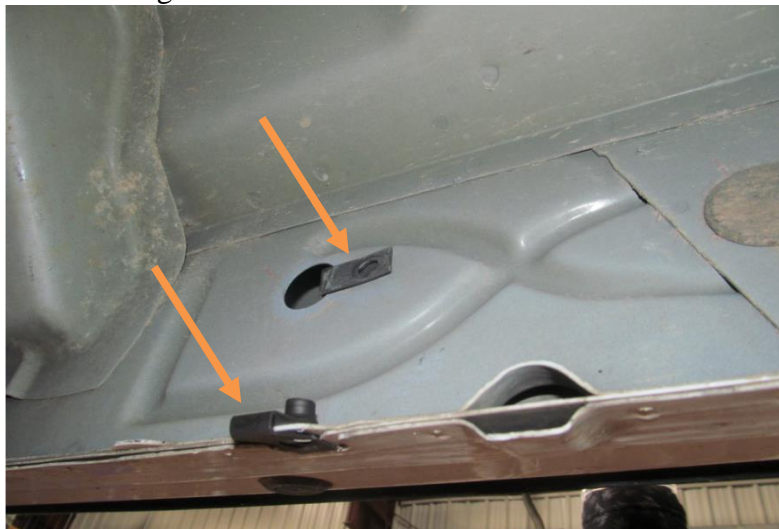


## II. TOOL LIST

1. A good friend
2. Basic tool kit
3. ½" socket

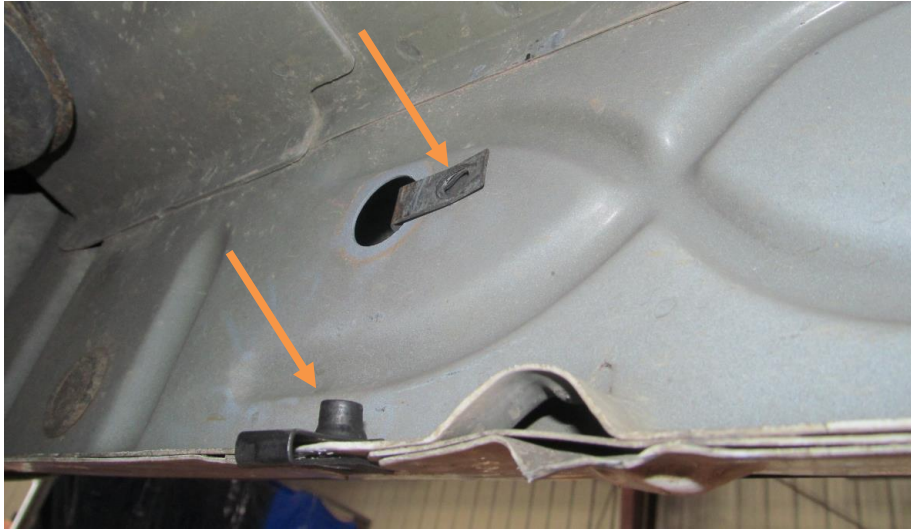
## III. VEHICLE PREPARATION

1. Install Spring Nuts from Hardware Kit #141 in existing cab holes for rear two mounts. You may need to remove tape or plastic plugs covering the holes.



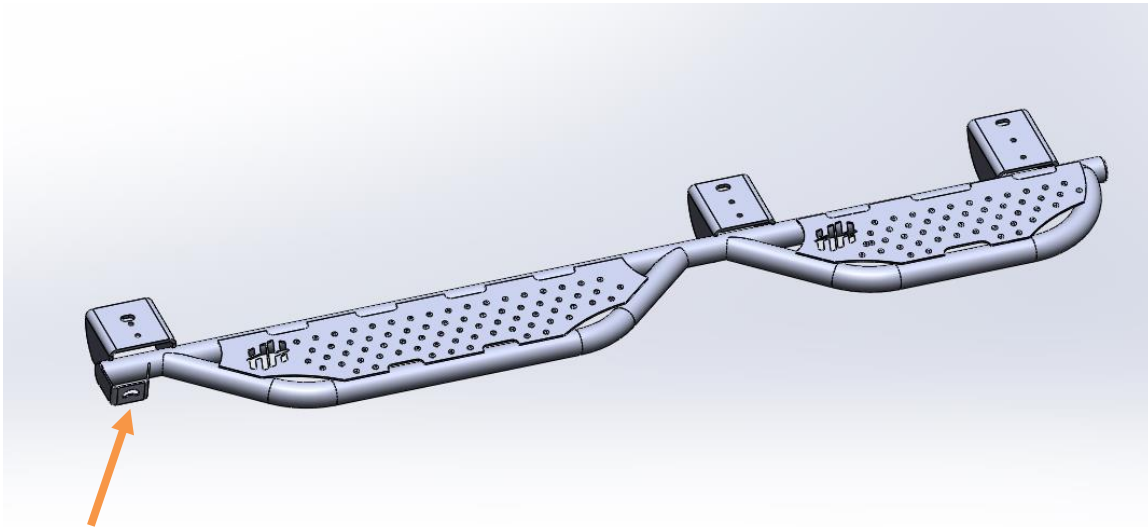


2014-20XX Chevy/GMC 1500



#### IV. RUNNING BOARD INSTALLATION

1. Identify the left running board. It will have a bottle opener (arrow) on the left side.



(Picture is for reference only; your running boards may differ.)

2. Have a friend help you hold the running board up to the mounting location.
3. Install one M8-1.25x25mm hex head bolt with a 5/16" lock washer and 5/16" flat washer in the top hole of the front mount through the OEM weld nut. Hand tighten bolt.
4. Install one 5/16"-18x1" hex head bolt with a 5/16" lock washer and 5/16" flat washer in the top hole of the rear mount. Hand tighten bolt.



## 2014-20XX Chevy/GMC 1500

5. Install three more 5/16"-18x1" hex head bolt, lock washer, flat washer combos in the back two mounts.
6. Install three more M8-1.25x25mm hex head bolt, lock washer, flat washer combos in the front two mounts through the OEM weld nuts.
7. Tighten all hardware with 1/2" socket. Installation is now complete. Follow the same procedure for the right side of the vehicle.



**CONGRATULATIONS!!**