

FRONT RECEIVER HITCH

INSTALLATION INSTRUCTIONS



SAFETY

Know safety, no injury. Know injury, no safety. ~Author Unknown

If there are any questions, call 1-855-HHTOUGH

- **READ ALL SAFETY INSTRUCTIONS BEFORE INSTALLATION**
 - FOLLOW ALL INSTRUCTIONS FOR PROPER ASSEMBLY
 - WEAR APPROPRIATE EYE PROTECTION
 - EXERCISE CARE WHEN LIFTING COMPONENTS
 - USE APPROPRIATE TORQUE FOR BOLTS
 - BLUE THREAD LOCKING COMPOUND IS RECOMMENDED ON ALL BOLTS

- SUGGESTED TORQUE VALUES FOR STEEL GRADE SAE 5 BOLTS

BOLT DIAMETER (INCH)	TREADS PER INCH	TORQUE (POUND-FEET)
1/4	20	7
5/16	18	14
3/8	16	25
7/16	14	40
1/2	13	60
9/16	12	88
5/8	11	120
3/4	10	200
7/8	9	302
1	8	466



FRONT RECEIVER HITCH INSTALL

I. PARTS LIST

<u>QUANTITY</u>	<u>PART NUMBER</u>	<u>DESCRIPTION</u>
1	600-56-0203	FRONT RECEIVER HITCH
1	60K-56-0055	HARDWARE KIT #55

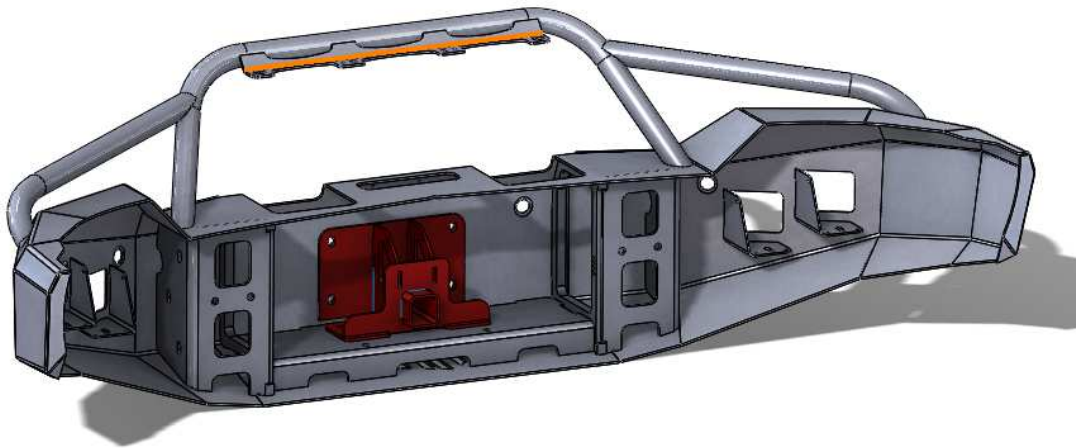
II. TOOL LIST

1. ¾" socket
2. ¾" wrench
3. 12" extension
4. Blue Threadlocking Compound

III. INSTALL OF RECEIVER HITCH

1. Your receiver hitch should be installed before you mount your Hammerhead Bumper.
2. Place the 600-56-0203 Front Receiver Hitch inside the bumper on the winch tray as shown below. (Receiver Hitch is highlighted in red)

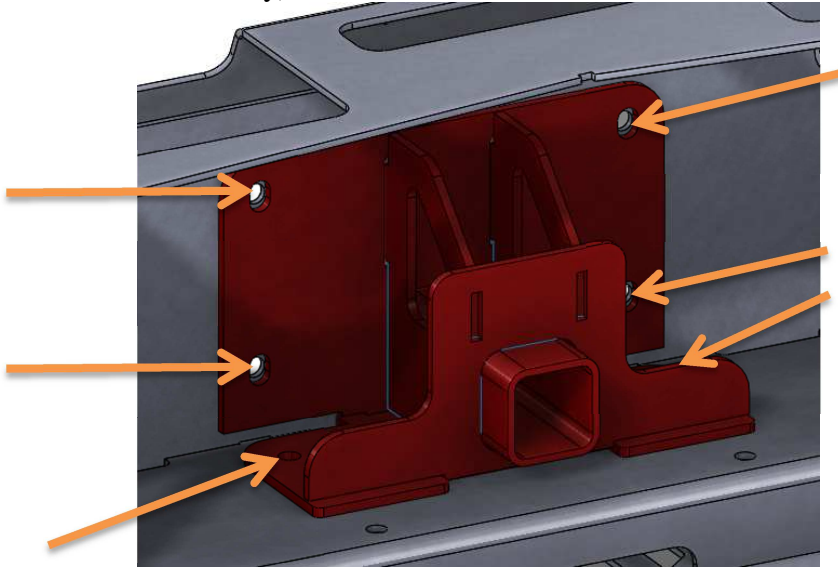
DO NOT MOUNT RECEIVER HITCH TO THE OUTSIDE OF BUMPER.



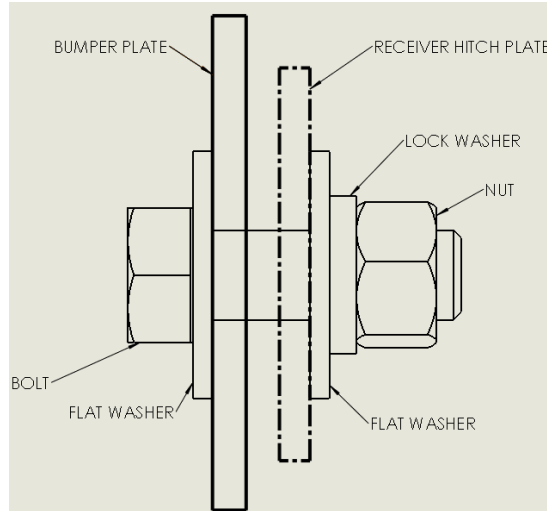


FRONT RECEIVER HITCH INSTALL

- Using Hardware Kit #55 and a 3/4" socket and wrench, secure the hitch to the face of the bumper and to the winch tray. Shown by orange arrows in the pictures below. Use blue threadlocking compound on all bolts. (A 12" socket extension is needed to mount the bolts to the winch tray)



- Bolts and hardware should be attached in the order shown below.



- Torque bolts to specified values shown in the chart on page 1 of these instructions.

Congratulations! Your installation is now complete. Now proceed to install your bumper using the instructions provided with it.
Thank you for your purchase.